



Datasheet for ABIN514395 anti-CHML antibody (AA 1-656)



[Go to Product page](#)

1 Image

Overview

Quantity:	50 µg
Target:	CHML
Binding Specificity:	AA 1-656
Reactivity:	Human
Host:	Mouse
Clonality:	Polyclonal
Conjugate:	This CHML antibody is un-conjugated
Application:	Western Blotting (WB)

Product Details

Purpose:	Mouse polyclonal antibody raised against a full-length human CHML protein.
Immunogen:	CHML (NP_001812.2, 1 a.a. ~ 656 a.a) full-length human protein.
Sequence:	MADNLPTEFD VVIIGTGLPE SILAAACRSR GQRVLHIDSR SYYGGNWASF SFGLLSWLK EYQQNDIGE ESTVWQDLI HETEEAITLR KKDETIQHTE AFCYASQDME DNVEEIGALQ KNPSLGVSNT FTEVLDSALP EESQLSYFNS DEMPAKHTQK SDTEISLEVT DVEESVEKEK YCGDKTCMHT VSDKDGDKDE SKSTVEDKAD EPIRNRITYS QIVKEGRRFN IDLVSKLLYS QGLLIDLLIK SDVSRVVEFK NVTRILAFRE GKVEQVPCSR ADVFNSKELT MVEKRMLMKF LTFCLEYEQH PDEYQAFRQC SFSEYLKTKK LTPNLQHFVL HSIAMTSESS CTTIDGLNAT KNFLQCLGRF GNTPFLFPLY GQGEIPQGFC RMCAVFGGIY CLRHKVQCFV VDKESGRCKA IIDHFGQRIN AKYFIVEDSY LSEETCSNVQ YKQISRVLV TDQSILKTDL DQQTSILIVP PAEPGACAVR VTELCSSMT CMKDTYLVHL TCSSSKTARE DLESVVKKLF TPYTETEINE EELTKPRLLW ALYFNMRDSS GISRSSYNGL PSNVVYVCSGP DCGLGNEHAV KQAETLFQEI FPTEEFCLPPP

Product Details

PNPEDIIFDG DDKQPEAPGT NNVVMAKLES SEESKNLESP EKHLQN

Cross-Reactivity: Human

Characteristics: Antibody reactive against mammalian transfected lysate.

Target Details

Target: CHML

Alternative Name: CHML ([CHML Products](#))

Background: Full Gene Name: choroideremia-like (Rab escort protein 2)
Synonyms: FLJ10071,FLJ13361,REP2

Gene ID: 1122

NCBI Accession: [NM_001821](#)

Application Details

Application Notes: Optimal working dilution should be determined by the investigator.

Restrictions: For Research Use only

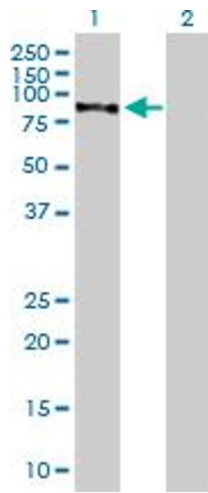
Handling

Buffer: In 1x PBS, pH 7.4

Handling Advice: Aliquot to avoid repeated freezing and thawing.

Storage: -20 °C

Storage Comment: Store at -20°C or lower. Aliquot to avoid repeated freezing and thawing.



Western Blotting

Image 1. Western Blot analysis of CHML expression in transfected 293T cell line by CHML MaxPab polyclonal antibody.

Lane 1: CHML transfected lysate(72.16 KDa).

Lane 2: Non-transfected lysate.