

Datasheet for ABIN514399  
**anti-CHN1 antibody (AA 1-459)**



[Go to Product page](#)

1 Image

## Overview

Quantity:	100 µg
Target:	CHN1 (ARHGAP2)
Binding Specificity:	AA 1-459
Reactivity:	Human
Host:	Rabbit
Clonality:	Polyclonal
Conjugate:	This CHN1 antibody is un-conjugated
Application:	Western Blotting (WB)

## Product Details

Purpose:	Rabbit polyclonal antibody raised against a full-length human CHN1 protein.
Immunogen:	CHN1 (NP_001813.1, 1 a.a. ~ 459 a.a) full-length human protein.
Sequence:	MALTLFDTDE YRPPVWKSYL YQLQQEAPHP RRITCTCEVE NRPKYGREF HGMISREAAD QLLIVAEGSY LIRESQRQPG TYTLALRFGS QTRNFRLYYD GKHFVGEKRF ESIHDLVTDG LITLYIETKA AEYIAKMTIN PIYEHVGYTT LNREPAYKKH MPVLKETHDE RDSTGQDGVS EKRLTSLVRR ATLKENEQIP KYEKIHNFKV HTRFRGPHWCE YCANFMWGLI AQGVKCADCG LNVHKQCCKM VPNDCKPDLK HVKKVYSCDL TTLVKAHTTK RPMVDMCIR EIESRGLNSE GLYRVSGFSD LIEDVKMAFD RDGEKADISV NMYEDINIIT GALKLYFRDL PIPLITYDAY PKFIESAKIM DPDEQLETLH EALKLLPPAH CETLRYLMAH LKRVTLHEKE NLMNAENLGI VFGPTLMRSP ELDAMAALND IRYQRLVVEL LIKNEDILF
Cross-Reactivity:	Human

## Product Details

Characteristics: Antibody reactive against mammalian transfected lysate.

## Target Details

Target: CHN1 (ARHGAP2)

Alternative Name: CHN1 ([ARHGAP2 Products](#))

Background: Full Gene Name: chimerin (chimaerin) 1  
Synonyms: ARHGAP2,CHN,DURS2,RHOGAP2

Gene ID: 1123

NCBI Accession: [NM\\_001822](#)

## Application Details

Application Notes: Optimal working dilution should be determined by the investigator.

Restrictions: For Research Use only

## Handling

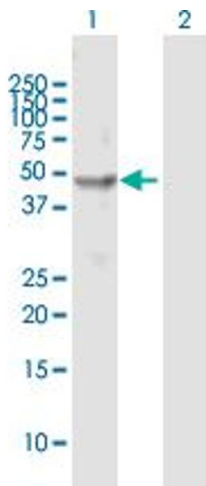
Buffer: In 1x PBS, pH 7.4

Handling Advice: Aliquot to avoid repeated freezing and thawing.

Storage: -20 °C

Storage Comment: Store at -20°C or lower. Aliquot to avoid repeated freezing and thawing.

## Images



### Western Blotting

**Image 1.** Western Blot analysis of CHN1 expression in transfected 293T cell line by CHN1 MaxPab polyclonal antibody.

Lane 1: CHN1 transfected lysate(53.20 KDa).

Lane 2: Non-transfected lysate.