



[Go to Product page](#)

Datasheet for ABIN514403
anti-CHRM3 antibody (AA 1-590)

2 Images

Overview

Quantity:	50 µg
Target:	CHRM3
Binding Specificity:	AA 1-590
Reactivity:	Human
Host:	Mouse
Clonality:	Polyclonal
Conjugate:	This CHRM3 antibody is un-conjugated
Application:	Western Blotting (WB)

Product Details

Purpose:	Mouse polyclonal antibody raised against a full-length human CHRM3 protein.
Immunogen:	CHRM3 (NP_000731.1, 1 a.a. ~ 590 a.a) full-length human protein.
Sequence:	MTLHNNSTTS PLFPNISSSW IHSPSDAGLP PGTVTHFGSY NVSRAAGNFS SPDGTTDDPL GGHTVWQVVF IAFLTGILAL VTIIGNILVI VSFKVNKQLK TVNNYFLLSL ACADLIIGVI SMNLFTTYII MNRWALGNLA CDLWLAIYV ASNASVMNLL VISFDYFSI TRPLTYRAKR TTKRAGVMIG LAWVISFVLW APAILFWQYF V GKRTVPPGE CFIQFLSEPT ITFGTAIAAF YMPVTIMTIL YWRIYKETEK RTKELAGLQA SGTEAETENF VHPTGSSRSC SSYELQQQSM KRSNRRKYGR CHFWFTTKSW KPSSEQMDQD HSSSDSWNNN DAAASLENSA SSDEEDIGSE TRAIYSIVLK LPGHSTILNS TKLPSSDNLQ VPEEELGMVD LERKADKLQA QKSVDDGGSF PKSFSLPIQ LESAVDTAKT SDVNSSVGKS TATLPLSFKE ATLAKRFALK TRSQITKRKR MSLVKEKAA QTLSAILLAF IITWTPYNIM VLVNTFCDSC IPKTFWNLY WLCYINSTVN PVCYALCNKT FRRTFKMLLL CQCDKKRRR QYQQRQSVI FHKRAPEQAL

Product Details

Cross-Reactivity:	Human
Characteristics:	Antibody reactive against mammalian transfected lysate.

Target Details

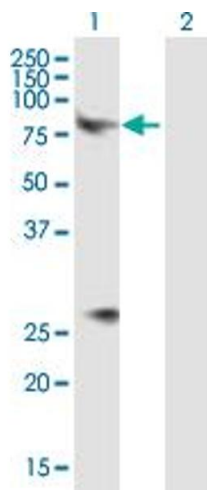
Target:	CHRM3
Alternative Name:	CHRM3 (CHRM3 Products)
Background:	Full Gene Name: cholinergic receptor, muscarinic 3 Synonyms: HM3
Gene ID:	1131
NCBI Accession:	NM_000740
Pathways:	Synaptic Membrane

Application Details

Application Notes:	Optimal working dilution should be determined by the investigator.
Restrictions:	For Research Use only

Handling

Buffer:	In 1x PBS, pH 7.4
Handling Advice:	Aliquot to avoid repeated freezing and thawing.
Storage:	-20 °C
Storage Comment:	Store at -20°C or lower. Aliquot to avoid repeated freezing and thawing.

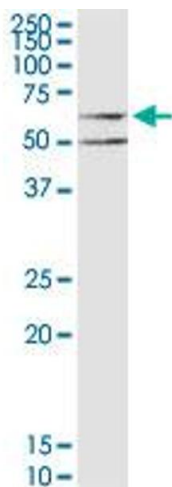


Western Blotting

Image 1. Western Blot analysis of CHRM3 expression in transfected 293T cell line by CHRM3 MaxPab polyclonal antibody.

Lane 1: CHRM3 transfected lysate(66.10 KDa).

Lane 2: Non-transfected lysate.



Western Blotting

Image 2. CHRM3 MaxPab polyclonal antibody. Western Blot analysis of CHRM3 expression in HeLa.