



[Go to Product page](#)

Datasheet for ABIN514409

anti-CHRNB1 antibody (AA 24-128)

1 Image

Overview

Quantity:	100 µg
Target:	CHRNB1
Binding Specificity:	AA 24-128
Reactivity:	Human
Host:	Mouse
Clonality:	Monoclonal
Conjugate:	This CHRNB1 antibody is un-conjugated
Application:	Western Blotting (WB), ELISA

Product Details

Purpose:	Mouse monoclonal antibody raised against a partial recombinant CHRNB1.
Immunogen:	CHRNB1 (NP_000738, 24 a.a. ~ 128 a.a) partial recombinant protein with GST tag. MW of the GST tag alone is 26 KDa.
Sequence:	SEAEGRLREK LFSGYDSSVR PAREVGDRV VSVGLILAQL ISLNEKDEEM STKVYLDLEW TDYRLSWDPA EHDGIDSLRI TAESVWLPDV VLLNNNDGNF DVALD
Clone:	4G4
Isotype:	IgG3
Cross-Reactivity:	Human
Characteristics:	Antibody Reactive Against Recombinant Protein.

Target Details

Target:	CHRNB1
Alternative Name:	CHRNB1 (CHRNB1 Products)
Background:	Full Gene Name: cholinergic receptor, nicotinic, beta 1 (muscle) Synonyms: ACHRB,CHRNB,CMS1D,CMS2A,SCCMS
Gene ID:	1140
NCBI Accession:	NM_000747
Pathways:	Synaptic Membrane

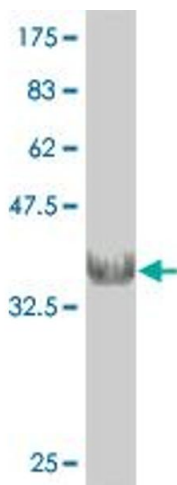
Application Details

Application Notes:	Optimal working dilution should be determined by the investigator.
Restrictions:	For Research Use only

Handling

Buffer:	In 1x PBS, pH 7.4
Handling Advice:	Aliquot to avoid repeated freezing and thawing.
Storage:	-20 °C
Storage Comment:	Store at -20°C or lower. Aliquot to avoid repeated freezing and thawing.

Images



Western Blotting

Image 1. Western Blot detection against Immunogen (37.29 kDa).