



[Go to Product page](#)

Datasheet for ABIN514415  
**anti-CIDEA antibody (AA 1-253)**

2 Images

Overview

|                      |   |
|----------------------|---|
| Quantity:            | 100 µL  |
| Target:              | CIDEA   |
| Binding Specificity: | AA 1-253  |
| Reactivity:          | Human   |
| Host:                | Rabbit  |
| Clonality:           | Polyclonal                                      |
| Conjugate:           | This CIDEA antibody is un-conjugated            |
| Application:         | Western Blotting (WB), Immunoprecipitation (IP) |

Product Details

|                   |  |
|-------------------|--|
| Purpose:          | Rabbit polyclonal antibody raised against a full-length human CIDEA protein.   |
| Immunogen:        | CIDEA (NP_938031.1, 1 a.a. ~ 253 a.a) full-length human protein.   |
| Sequence:         | MRGDRASGGP GNHNGSWARE GPRLGPSWKR GLWSPRGGPN RPAEPSRPLT FMGSQTKRVL<br>FTPLMHPARP FRVSNHDRSS RRGVMASSLQ ELISKTLDAL VIATGLVTLV LEEDGTVVDT<br>EEFFQTLGDN THFMILEKGQ KWMPGSQHVP TCSPPKRSGI ARVTFDLYRL NPKDFIGCLN<br>VKATMYEMYS VSYDIRCTGL KGLLRSLRFR LSYSAQVTGQ FLIYLGTYML RVLDDKEERP<br>SLRSQAKGRF TCG |
| Cross-Reactivity: | Human  |
| Characteristics:  | Antibody reactive against mammalian transfected lysate.  |

## Target Details

|                   |  |
|-------------------|--|
| Target:           | CIDEA  |
| Alternative Name: | CIDEA ( <a href="#">CIDEA Products</a> )                                     |
| Background:       | Full Gene Name: cell death-inducing DFFA-like effector a<br>Synonyms: CIDE-A |
| Gene ID:          | 1149   |
| NCBI Accession:   | <a href="#">NM_198289</a>  |

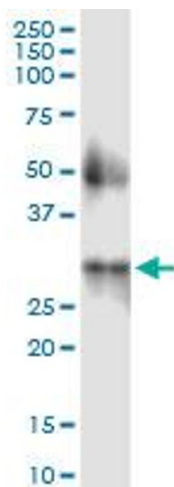
## Application Details

|                    |  |
|--------------------|--|
| Application Notes: | Optimal working dilution should be determined by the investigator. |
| Restrictions:      | For Research Use only  |

## Handling

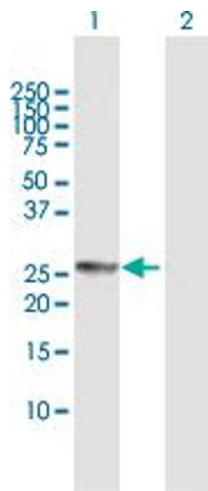
|                  |  |
|------------------|--|
| Format:          | Liquid   |
| Buffer:          | No additive  |
| Preservative:    | Without preservative   |
| Handling Advice: | Aliquot to avoid repeated freezing and thawing.                          |
| Storage:         | -20 °C   |
| Storage Comment: | Store at -20°C or lower. Aliquot to avoid repeated freezing and thawing. |

## Images



### Immunoprecipitation

**Image 1.** Immunoprecipitation of CIDEA transfected lysate using anti-CIDEA MaxPab rabbit polyclonal antibody and Protein A Magnetic Bead , and immunoblotted with CIDEA purified MaxPab mouse polyclonal antibody (B01P) .



### Western Blotting

**Image 2.** Western Blot analysis of CIDEA expression in transfected 293T cell line by CIDEA MaxPab polyclonal antibody.

Lane 1: CIDEA transfected lysate(28.30 KDa).

Lane 2: Non-transfected lysate.