



[Go to Product page](#)

Datasheet for ABIN514420

## anti-CISH antibody (AA 1-258)

### 3 Images

#### Overview

Quantity:	50 µg
Target:	CISH
Binding Specificity:	AA 1-258
Reactivity:	Human
Host:	Mouse
Clonality:	Polyclonal
Conjugate:	This CISH antibody is un-conjugated
Application:	Western Blotting (WB), Immunofluorescence (IF)

#### Product Details

Purpose:	Mouse polyclonal antibody raised against a full-length human CISH protein.
Immunogen:	CISH (NP_659508.1, 1 a.a. ~ 258 a.a) full-length human protein.
Sequence:	MVLCVQGPRP LLAVERTGQR PLWAPSLELP KPVMQPLPAG AFLEEVAEGT PAQTESEPKV LDPEEDLLCI AKTFSYLRES GWYWGSITAS EARQHLQKMP EGTFIVRDST HPSYLFITLSV KTRRGPTNVR IEYADSSFRL DSNCLSRPRI LAFPDVVSIV QHYVASCTAD TRSDSPDPAP TPALPMPKED APSDPALPAP PPATAVHLKL VQPFVRRSSA RSLQHLCLRV INRLVADVDC LPLPRRMADY LRQYPFQL
Cross-Reactivity:	Human
Characteristics:	Antibody reactive against mammalian transfected lysate.

## Target Details

Target:	CISH
Alternative Name:	CISH ( <a href="#">CISH Products</a> )
Background:	Full Gene Name: cytokine inducible SH2-containing protein Synonyms: CIS,CIS-1,G18,SOCS
Gene ID:	1154
NCBI Accession:	<a href="#">NM_145071</a>
Pathways:	<a href="#">JAK-STAT Signaling</a> , <a href="#">Response to Growth Hormone Stimulus</a>

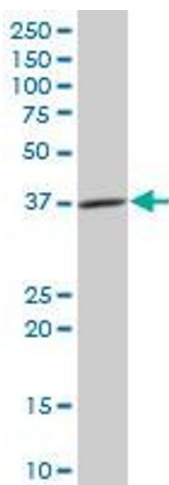
## Application Details

Application Notes:	Optimal working dilution should be determined by the investigator.
Restrictions:	For Research Use only

## Handling

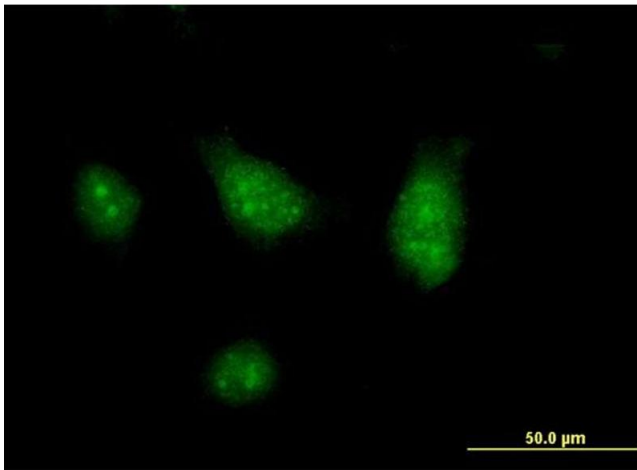
Buffer:	In 1x PBS, pH 7.4
Handling Advice:	Aliquot to avoid repeated freezing and thawing.
Storage:	-20 °C
Storage Comment:	Store at -20°C or lower. Aliquot to avoid repeated freezing and thawing.

## Images



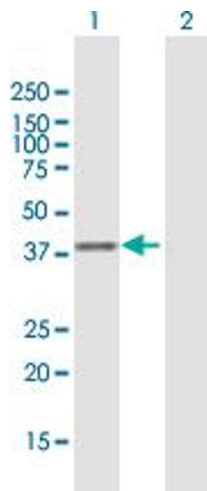
### Western Blotting

**Image 1.** CISH MaxPab polyclonal antibody. Western Blot analysis of CISH expression in human spleen.



### Immunofluorescence

**Image 2.** Immunofluorescence of purified MaxPab antibody to CISH on HeLa cell. [antibody concentration 10 ug/ml]



### Western Blotting

**Image 3.** Western Blot analysis of CISH expression in transfected 293T cell line by CISH MaxPab polyclonal antibody.

Lane 1: CISH transfected lysate(28.38 KDa).

Lane 2: Non-transfected lysate.