



[Go to Product page](#)

Datasheet for ABIN514425
anti-TBCB antibody (AA 1-244)

2 Images

Overview

Quantity:	50 µg
Target:	TBCB
Binding Specificity:	AA 1-244
Reactivity:	Human
Host:	Mouse
Clonality:	Polyclonal
Conjugate:	This TBCB antibody is un-conjugated
Application:	Western Blotting (WB)

Product Details

Purpose:	Mouse polyclonal antibody raised against a full-length human TBCB protein.
Immunogen:	TBCB (NP_001272.2, 1 a.a. ~ 244 a.a) full-length human protein.
Sequence:	MEVTGVSAPT VTFVSSSLN TFRSEKRYSR SLTIAEFKCK LELLVGSPAS CMELELYGVD DKFYSKLDQE DALLGSDPVD DGCRIHVIDH SGARLGEYED VSRVEKYTIS QEAYDQRQDT VRSFLKRSKL GRYNEEERAQ QEAEAAQLA EEKAQASSIP VGSRCEVRAA GQSPRRGTVM YVGLTDFKPG YWIGVRYDEP LGKNDGSVNG KRYFECQAKY GAFVKPAVVT VGDFPEEDYG LDEI
Cross-Reactivity:	Human
Characteristics:	Antibody reactive against mammalian transfected lysate.

Target Details

Target:	TBCB
---------	------

Target Details

Alternative Name:	TBCB (TBCB Products)
Background:	Full Gene Name: tubulin folding cofactor B Synonyms: CG22,CKAP1,CKAPI,MGC14625
Gene ID:	1155
NCBI Accession:	NM_001281

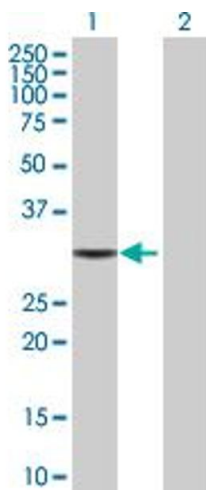
Application Details

Application Notes:	Optimal working dilution should be determined by the investigator.
Restrictions:	For Research Use only

Handling

Buffer:	In 1x PBS, pH 7.4
Handling Advice:	Aliquot to avoid repeated freezing and thawing.
Storage:	-20 °C
Storage Comment:	Store at -20°C or lower. Aliquot to avoid repeated freezing and thawing.

Images

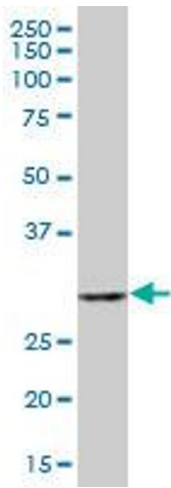


Western Blotting

Image 1. Western Blot analysis of TBCB expression in transfected 293T cell line by TBCB MaxPab polyclonal antibody.

Lane 1: CKAP1 transfected lysate(26.84 KDa).

Lane 2: Non-transfected lysate.



Western Blotting

Image 2. CKAP1 MaxPab polyclonal antibody. Western Blot analysis of CKAP1 expression in human spleen.