



[Go to Product page](#)

Datasheet for ABIN514458
anti-CLK1 antibody (AA 1-484)

2 Images

Overview

| | |
|----------------------|--|
| Quantity: | 50 µg |
| Target: | CLK1 |
| Binding Specificity: | AA 1-484 |
| Reactivity: | Human |
| Host: | Mouse |
| Clonality: | Polyclonal |
| Conjugate: | This CLK1 antibody is un-conjugated |
| Application: | Western Blotting (WB), Immunofluorescence (IF) |

Product Details

| | |
|-------------------|---|
| Purpose: | Mouse polyclonal antibody raised against a full-length human CLK1 protein. |
| Immunogen: | CLK1 (AAH31549, 1 a.a. ~ 484 a.a) full-length human protein. |
| Sequence: | MRHSKRTYCP DWDDKDWDYG KWRSSSSSHKR RKRSHSSAQE NKRCCKYNHNSK MCDSHYLESR SINEKDYHSR RYIDEYRNDY TQGCEPGHRR RDHESRYQNH SSKSSGRSGR SSYKSKHRIH HSTSHRRSHG KSHRRKRTRS VEDDEEGRLI CQSGDVLSAR YEIVDTLGEG AFGKVVECID HKAGGRHVAV KIVKNVDRYC EAARSEIQVL EHLNTTDPNS TFRCVQMLEW FEHHGHICIV FELLGLSTYD FIKENGFLPF RLDHIRKMAY QICKSVNFLH SNKLTHTDLK PENILFVQSD YTEAYNPKIK RDERTLINPD IKVVDVFGSAT YDDEHHSTLV STRHYRAPEV ILALGWSQPC DVWSIGCILI EYYLGFTVFP THDSKEHLAM MERILGPLPK HMIQKTRKRK YFHHDRLDWD EHSSAGRYVS RRCKPLKEFM LSQDVEHERL FDLIQKMLEY DPAKRITLRE ALKHPFFDLL KCSI |
| Cross-Reactivity: | Human |

Product Details

Characteristics: Antibody reactive against mammalian transfected lysate.

Target Details

Target: CLK1

Alternative Name: CLK1 ([CLK1 Products](#))

Background: Full Gene Name: CDC-like kinase 1
Synonyms: CLK,CLK/STY,STY

Gene ID: 1195

Application Details

Application Notes: Optimal working dilution should be determined by the investigator.

Restrictions: For Research Use only

Handling

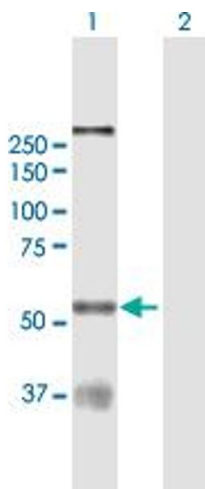
Buffer: In 1x PBS, pH 7.4

Handling Advice: Aliquot to avoid repeated freezing and thawing.

Storage: -20 °C

Storage Comment: Store at -20°C or lower. Aliquot to avoid repeated freezing and thawing.

Images

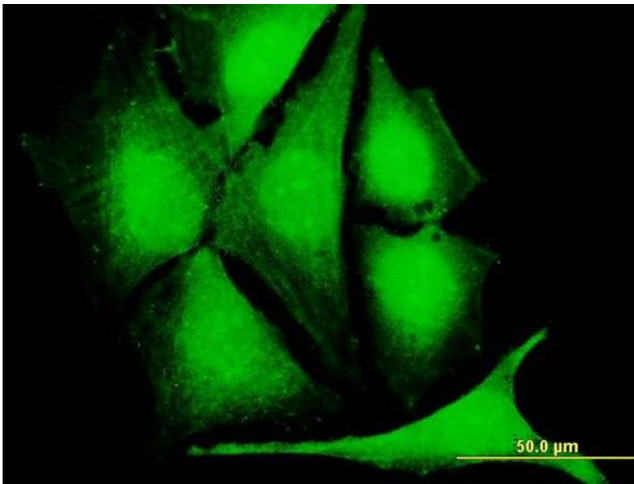


Western Blotting

Image 1. Western Blot analysis of CLK1 expression in transfected 293T cell line by CLK1 MaxPab polyclonal antibody.

Lane 1: CLK1 transfected lysate(53.35 KDa).

Lane 2: Non-transfected lysate.



Immunofluorescence

Image 2. Immunofluorescence of purified MaxPab antibody to CLK1 on HeLa cell. [antibody concentration 10 ug/ml]