

Datasheet for ABIN514472  
**anti-CLPS antibody (AA 23-112)**

## 3 Images

[Go to Product page](#)

## Overview

Quantity:	100 µg
Target:	CLPS
Binding Specificity:	AA 23-112
Reactivity:	Human
Host:	Mouse
Clonality:	Monoclonal
Conjugate:	This CLPS antibody is un-conjugated
Application:	ELISA, Western Blotting (WB)

## Product Details

Purpose:	Mouse monoclonal antibody raised against a partial recombinant CLPS.
Immunogen:	CLPS (NP_001823, 23 a.a. ~ 112 a.a) partial recombinant protein with GST tag. MW of the GST tag alone is 26 KDa.
Sequence:	GIINLENGE LCMNSAQCKS NCCQHSSALG LARCTSMASE NSECSVKTLY GIYYKPCPER GLTCEGDKTI VGSITNTNFG ICHDAGRSKQ
Clone:	4G3
Isotype:	IgG2a
Cross-Reactivity:	Human
Characteristics:	Antibody Reactive Against Recombinant Protein.

### Target Details

Target:	CLPS
Alternative Name:	CLPS (CLPS Products)
Background:	Full Gene Name: colipase, pancreatic Synonyms:
Gene ID:	1208
NCBI Accession:	NM_001832
Pathways:	Lipid Metabolism

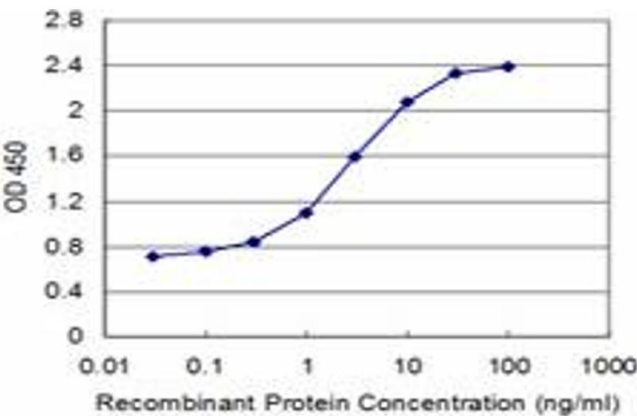
### Application Details

Application Notes:	Optimal working dilution should be determined by the investigator.
Restrictions:	For Research Use only

### Handling

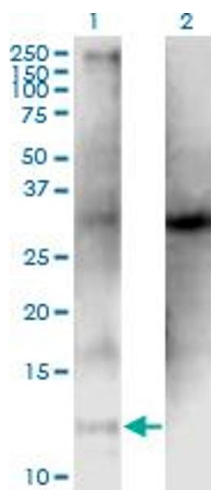
Buffer:	In 1x PBS, pH 7.4
Handling Advice:	Aliquot to avoid repeated freezing and thawing.
Storage:	-20 °C
Storage Comment:	Store at -20°C or lower. Aliquot to avoid repeated freezing and thawing.

### Images



#### ELISA

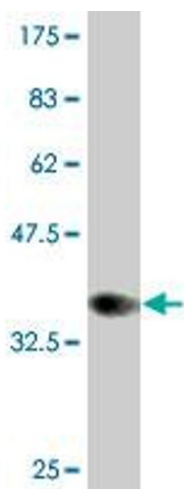
**Image 1.** Detection limit for recombinant GST tagged CLPS is approximately 0.03ng/ml as a capture antibody.



#### Western Blotting

**Image 2.** Western Blot analysis of CLPS expression in transfected 293T cell line by CLPS monoclonal antibody (M05), clone 4G3.

Lane 1: CLPS transfected lysate (Predicted MW: 12 KDa).  
Lane 2: Non-transfected lysate.



#### Western Blotting

**Image 3.** Western Blot detection against Immunogen (35.64 KDa) .