

Datasheet for ABIN514473
anti-CLPS antibody (AA 1-112)[Go to Product page](#)

1 Image

Overview

Quantity:	100 µg
Target:	CLPS
Binding Specificity:	AA 1-112
Reactivity:	Human
Host:	Mouse
Clonality:	Monoclonal
Conjugate:	This CLPS antibody is un-conjugated
Application:	ELISA

Product Details

Purpose:	Mouse monoclonal antibody raised against a full-length recombinant CLPS.
Immunogen:	CLPS (AAH07061, 1 a.a. ~ 112 a.a) full-length recombinant protein with GST tag. MW of the GST tag alone is 26 KDa.
Sequence:	MEKILILLLV ALSVAYAAPG PRGIIINLEN GELCMNSAQC KSNCCQHSSA LGLARCTSMA SENSECSVKT LYGIYYKCPC ERGLTCEGDK TIVGSITNTN FGICHDAGRS KQ
Clone:	1G5
Isotype:	IgG2a
Cross-Reactivity:	Human
Characteristics:	Antibody Reactive Against Recombinant Protein.

Target Details

Target:	CLPS
Alternative Name:	CLPS (CLPS Products)
Background:	Full Gene Name: colipase, pancreatic Synonyms:
Gene ID:	1208
Pathways:	Lipid Metabolism

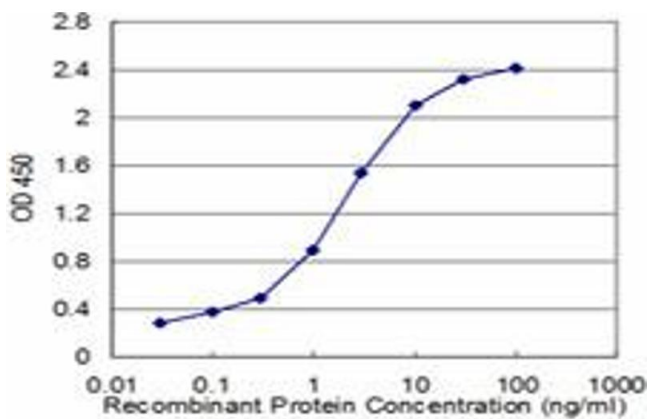
Application Details

Application Notes:	Optimal working dilution should be determined by the investigator.
Restrictions:	For Research Use only

Handling

Buffer:	In 1x PBS, pH 7.4
Handling Advice:	Aliquot to avoid repeated freezing and thawing.
Storage:	-20 °C
Storage Comment:	Store at -20°C or lower. Aliquot to avoid repeated freezing and thawing.

Images



ELISA

Image 1. Detection limit for recombinant GST tagged CLPS is approximately 0.03ng/ml as a capture antibody.