



[Go to Product page](#)

Datasheet for ABIN514498  
**anti-Cnpase antibody (AA 1-421)**

2 Images

Overview

Quantity:	50 µg
Target:	Cnpase (CNP)
Binding Specificity:	AA 1-421
Reactivity:	Human
Host:	Mouse
Clonality:	Polyclonal
Conjugate:	This Cnpase antibody is un-conjugated
Application:	Western Blotting (WB)

Product Details

Purpose:	Mouse polyclonal antibody raised against a full-length human CNP protein.
Immunogen:	CNP (NP_149124.3, 1 a.a. ~ 421 a.a) full-length human protein.
Sequence:	MNRGFSRKSH TFLPKIFFRK MSSSGAKDKP ELQFPFLQDE DTVATLLECK TLFILRGLPG SGKSTLARVI VDKYRDGTKM VSADAYKITP GARGAFSEY KRLDEDLAAY CRRRDIRILV LDDTNHERER LEQLFEMADQ YQYQVVLVEP KTAWRLDCAQ LKEKNQWQLS ADDLKKLKPG LEKDFLPLYF GWFLTCKSSE TLRKAGQVFL EELGNHKAFK KELRQFVPGD EPREKMDLVT YFGKRPPGVL HCTTKFCDYG KAPGAEYYAQ QDVLKKSYSK AFTLTISALF VTPKTTGARV ELSEQQLQLW PSDVDKLSPT DNLPRGSAH ITLGCAADVE AVQTGLDLLE ILRQEKGGSR GEEVGELSRG KLYSLGNRW MLTLAKNMEV RAIFTGYYGK GKPVPQTQGSR KGGALQSCTI I
Cross-Reactivity:	Human, Rat
Characteristics:	Antibody reactive against mammalian transfected lysate.

## Target Details

Target:	Cnpase (CNP)
Alternative Name:	CNP ( <a href="#">CNP Products</a> )
Background:	Full Gene Name: 2',3'-cyclic nucleotide 3' phosphodiesterase Synonyms: CNP1
Gene ID:	1267
NCBI Accession:	<a href="#">NM_033133</a>

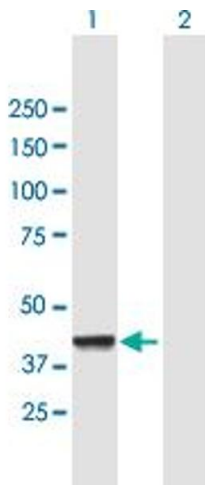
## Application Details

Application Notes:	Optimal working dilution should be determined by the investigator.
Restrictions:	For Research Use only

## Handling

Buffer:	In 1x PBS, pH 7.4
Handling Advice:	Aliquot to avoid repeated freezing and thawing.
Storage:	-20 °C
Storage Comment:	Store at -20°C or lower. Aliquot to avoid repeated freezing and thawing.

## Images



### Western Blotting

**Image 1.** Western Blot analysis of CNP expression in transfected 293T cell line by CNP MaxPab polyclonal antibody.

Lane 1: CNP transfected lysate(46.31 kDa).

Lane 2: Non-transfected lysate.



### Western Blotting

**Image 2.** CNP MaxPab polyclonal antibody. Western Blot analysis of CNP expression in rat brain.