



[Go to Product page](#)

Datasheet for ABIN514508
anti-CNTF antibody (AA 1-200)

2 Images

Overview

Quantity:	100 µL
Target:	CNTF
Binding Specificity:	AA 1-200
Reactivity:	Human
Host:	Rabbit
Clonality:	Polyclonal
Conjugate:	This CNTF antibody is un-conjugated
Application:	Western Blotting (WB), Immunoprecipitation (IP)

Product Details

Purpose:	Rabbit polyclonal antibody raised against a full-length human CNTF protein.
Immunogen:	CNTF (NP_000605.1, 1 a.a. ~ 200 a.a) full-length human protein.
Sequence:	MAFTEHSPLT PHRRDLCRSR IWLARKIRSD LTALTESYVK HQGLNKNINL DSADGMPVAS TDQWSELTEA ERLQENLQAY RTFHVLLARL LEDQQVHFTP TEGDFHQAIH TLLLQVAafa YQIEELMILL EYKIPRNEAD GMPINVDGG LFEKKLWGLK VLQELSQWTV RSIHDLRFIS SHQTGIPARG SHYIANNKKM
Cross-Reactivity:	Human
Characteristics:	Antibody reactive against mammalian transfected lysate.

Target Details

Target:	CNTF
---------	------

Target Details

Alternative Name:	CNTF (CNTF Products)
Background:	Full Gene Name: ciliary neurotrophic factor Synonyms: HCNTF
Gene ID:	1270
NCBI Accession:	NM_000614
Pathways:	JAK-STAT Signaling

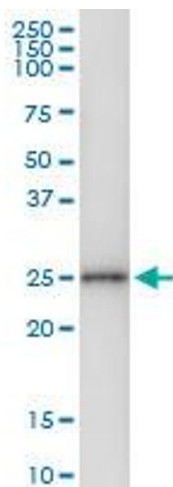
Application Details

Application Notes:	Optimal working dilution should be determined by the investigator.
Restrictions:	For Research Use only

Handling

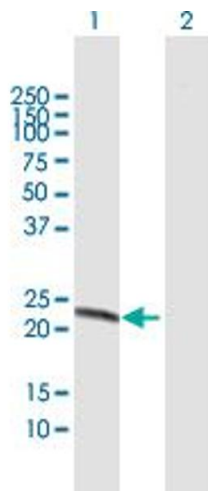
Format:	Liquid
Buffer:	No additive
Preservative:	Without preservative
Handling Advice:	Aliquot to avoid repeated freezing and thawing.
Storage:	-20 °C
Storage Comment:	Store at -20°C or lower. Aliquot to avoid repeated freezing and thawing.

Images



Immunoprecipitation

Image 1. Immunoprecipitation of CNTF transfected lysate using anti-CNTF MaxPab rabbit polyclonal antibody and Protein A Magnetic Bead , and immunoblotted with CNTF purified MaxPab mouse polyclonal antibody (B01P) .



Western Blotting

Image 2. Western Blot analysis of CNTF expression in transfected 293T cell line by CNTF MaxPab polyclonal antibody.

Lane 1: CNTF transfected lysate(22.9 KDa).

Lane 2: Non-transfected lysate.