



[Go to Product page](#)

Datasheet for ABIN514514
anti-COL4a6 antibody (AA 1-73)

2 Images

Overview

Quantity:	100 µg
Target:	COL4a6
Binding Specificity:	AA 1-73
Reactivity:	Human
Host:	Mouse
Clonality:	Monoclonal
Conjugate:	This COL4a6 antibody is un-conjugated
Application:	ELISA, Proximity Ligation Assay (PLA)

Product Details

Purpose:	Mouse monoclonal antibody raised against a full length recombinant COL4A6.
Immunogen:	COL4A6 (AAH05305, 1 a.a. ~ 73 a.a) full-length recombinant protein with GST tag. MW of the GST tag alone is 26 KDa.
Sequence:	MLINKLWLLL VTLCLTEELA AAGEKSYGKP CGGQDCSGSC QCFPEKGARH NLQLLNDMAG RLYHFSEVLP NLF
Clone:	1G11
Isotype:	IgG2a
Cross-Reactivity:	Human
Characteristics:	Antibody Reactive Against Recombinant Protein.

Target Details

Target:	COL4a6
Alternative Name:	COL4A6 (COL4a6 Products)
Background:	Full Gene Name: collagen, type IV, alpha 6 Synonyms: MGC88184
Gene ID:	1288

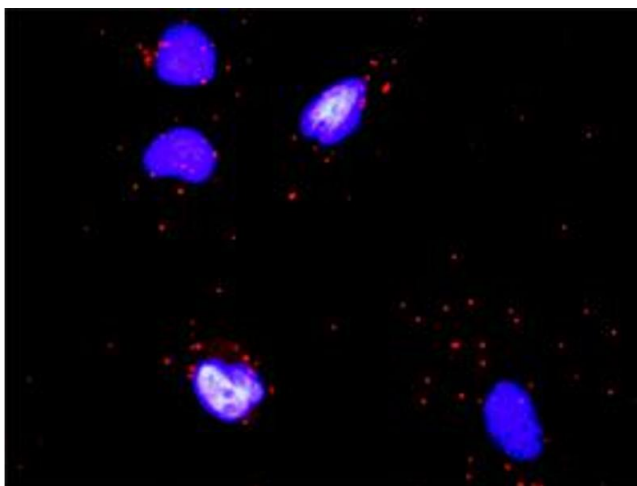
Application Details

Application Notes:	Optimal working dilution should be determined by the investigator.
Restrictions:	For Research Use only

Handling

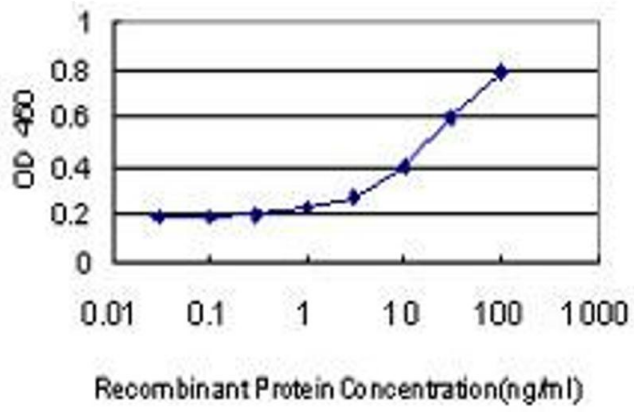
Buffer:	In 1x PBS, pH 7.4
Handling Advice:	Aliquot to avoid repeated freezing and thawing.
Storage:	-20 °C
Storage Comment:	Store at -20°C or lower. Aliquot to avoid repeated freezing and thawing.

Images



Proximity Ligation Assay

Image 1. Proximity Ligation Analysis of protein-protein interactions between OSM and COL4A6. HeLa cells were stained with anti-OSM rabbit purified polyclonal 1:1200 and anti-COL4A6 mouse monoclonal antibody 1:50. Each red dot represents the detection of protein-protein interaction complex, and nuclei were counterstained with DAPI (blue).



ELISA

Image 2. Detection limit for recombinant GST tagged COL4A6 is approximately 1 ng/ml as a capture antibody.