



[Go to Product page](#)

Datasheet for ABIN514522

## anti-COMT antibody (AA 1-221)

2 Images

1 Publication

### Overview

Quantity:	50 µL
Target:	COMT
Binding Specificity:	AA 1-221
Reactivity:	Human
Host:	Mouse
Clonality:	Polyclonal
Conjugate:	This COMT antibody is un-conjugated
Application:	Western Blotting (WB)

### Product Details

Purpose:	Mouse polyclonal antibody raised against a full-length human COMT protein.
Immunogen:	COMT (NP_009294.1, 1 a.a. ~ 221 a.a) full-length human protein.
Sequence:	MGDTKEQRIL NHVLQHAEPG NAQSVLEAID TYCEQKEWAM NVGDKKGGKIV DAVIQEHQPS VLEELGAYCG YSAVRMARLL SPGARLITIE INPDCAAITQ RMVDFAGVKD KVTLLVVGASQ DIIPQLKKKY DVDTLDMVFL DHWKDRYLPD TLLLEECGLL RKGTVLLADN VICPGAPDFL AHVRGSSCFE CTHYQSFLEY REVVDGLEKA IYKGGPSEAG P
Cross-Reactivity:	Human
Characteristics:	Antibody reactive against mammalian transfected lysate.

### Target Details

Target:	COMT
---------	------

## Target Details

---

Alternative Name:	COMT ( <a href="#">COMT Products</a> )
Background:	Full Gene Name: catechol-O-methyltransferase Synonyms:
Gene ID:	1312
NCBI Accession:	<a href="#">NM_007310</a>
Pathways:	<a href="#">Steroid Hormone Biosynthesis</a> , <a href="#">SARS-CoV-2 Protein Interactome</a>

## Application Details

---

Application Notes:	Optimal working dilution should be determined by the investigator.
Restrictions:	For Research Use only

## Handling

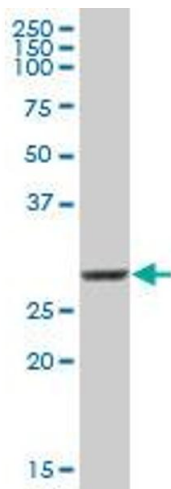
---

Format:	Liquid
Buffer:	No additive
Preservative:	Without preservative
Handling Advice:	Aliquot to avoid repeated freezing and thawing.
Storage:	-20 °C
Storage Comment:	Store at -20°C or lower. Aliquot to avoid repeated freezing and thawing.

## Publications

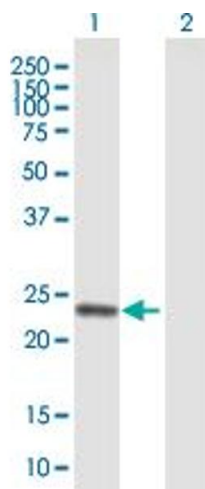
---

Product cited in:	Hevir, Sinkovec, Rižner: "Disturbed expression of phase I and phase II estrogen-metabolizing enzymes in endometrial cancer: lower levels of CYP1B1 and increased expression of S-COMT." in: <b>Molecular and cellular endocrinology</b> , Vol. 331, Issue 1, pp. 158-67, (2010) ( <a href="#">PubMed</a> ).
-------------------	---



#### Western Blotting

**Image 1.** COMT MaxPab polyclonal antibody. Western Blot analysis of COMT expression in human placenta.



#### Western Blotting

**Image 2.** Western Blot analysis of COMT expression in transfected 293T cell line by COMT MaxPab polyclonal antibody.

Lane 1: COMT transfected lysate(24.31 KDa).

Lane 2: Non-transfected lysate.