



[Go to Product page](#)

Datasheet for ABIN514524  
**anti-COMT antibody (AA 1-221)**

3 Images

Overview

Quantity:	100 µL
Target:	COMT
Binding Specificity:	AA 1-221
Reactivity:	Human
Host:	Rabbit
Clonality:	Polyclonal
Conjugate:	This COMT antibody is un-conjugated
Application:	Western Blotting (WB), Immunoprecipitation (IP)

Product Details

Purpose:	Rabbit polyclonal antibody raised against a full-length human COMT protein.
Immunogen:	COMT (NP_009294.1, 1 a.a. ~ 221 a.a) full-length human protein.
Sequence:	MGDTKEQRIL NHVLQHAEPG NAQSVLEAID TYCEQKEWAM NVGDKKGGKIV DAVIQEHQPS VLLELGAYCG YSAVRMARLL SPGARLITIE INPDCAAITQ RMVDFAGVKD KVTLLVVGASQ DIIPQLKKKY DVDTLDMVFL DHWKDRYLPD TLLLEECGLL RKGTVLLADN VICPGAPDFL AHVRGSSCFE CTHYQSFLEY REVVDGLEKA IYKGGPSEAG P
Cross-Reactivity:	Human, Mouse
Characteristics:	Antibody reactive against mammalian transfected lysate.

Target Details

Target:	COMT
---------	------

## Target Details

Alternative Name:	COMT ( <a href="#">COMT Products</a> )
Background:	Full Gene Name: catechol-O-methyltransferase Synonyms:
Gene ID:	1312
NCBI Accession:	<a href="#">NM_007310</a>
Pathways:	<a href="#">Steroid Hormone Biosynthesis</a> , <a href="#">SARS-CoV-2 Protein Interactome</a>

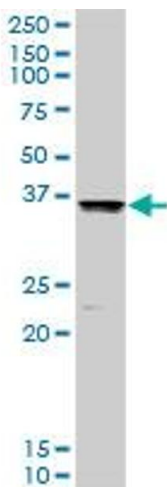
## Application Details

Application Notes:	Optimal working dilution should be determined by the investigator.
Restrictions:	For Research Use only

## Handling

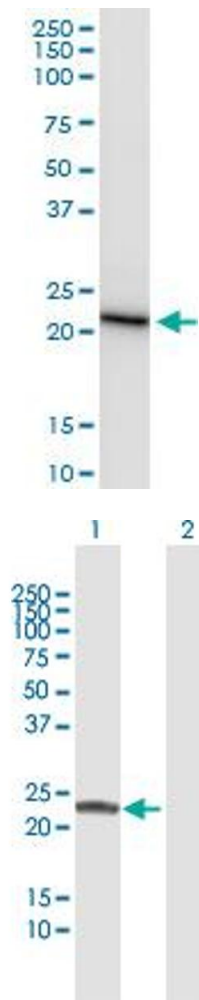
Format:	Liquid
Buffer:	No additive
Preservative:	Without preservative
Handling Advice:	Aliquot to avoid repeated freezing and thawing.
Storage:	-20 °C
Storage Comment:	Store at -20°C or lower. Aliquot to avoid repeated freezing and thawing.

## Images



### Western Blotting

**Image 1.** COMT MaxPab rabbit polyclonal antibody.  
Western Blot analysis of COMT expression in mouse liver.



### Immunoprecipitation

**Image 2.** Immunoprecipitation of COMT transfected lysate using anti-COMT MaxPab rabbit polyclonal antibody and Protein A Magnetic Bead , and immunoblotted with COMT purified MaxPab mouse polyclonal antibody (B01P) .

### Western Blotting

**Image 3.** Western Blot analysis of COMT expression in transfected 293T cell line by COMT MaxPab polyclonal antibody.

Lane 1: COMT transfected lysate(24.4 KDa).

Lane 2: Non-transfected lysate.