

Datasheet for ABIN514553  
**anti-CPB1 antibody (AA 14-417)**[Go to Product page](#)

## 4 Images

## Overview

Quantity:	100 µg
Target:	CPB1
Binding Specificity:	AA 14-417
Reactivity:	Human
Host:	Mouse
Clonality:	Monoclonal
Conjugate:	This CPB1 antibody is un-conjugated
Application:	Western Blotting (WB), ELISA, Immunoprecipitation (IP), Immunohistochemistry (Paraffin-embedded Sections) (IHC (p))

## Product Details

Purpose:	Mouse monoclonal antibody raised against a full length recombinant CPB1.
Immunogen:	CPB1 (AAH15338, 14 a.a. ~ 417 a.a) full-length recombinant protein with GST tag. MW of the GST tag alone is 26 KDa.
Sequence:	SAHHGGEHFE GEKVFRVNV DENHINIIRE LASTTQIDFW KPDSVTQIKP HSTVDFRVKA EDTIVTVENVL KQNELQYKVL ISNLRNVVEA QFDSRVVATG HSYEKYNKWE TIEAWTQQVA TENPALISRS VIGTTFEGRA IYLLKVGKAG QNKPAIFMDC GFHAREWISP AFCQWFVREA VRTYGREIQV TELLDKLDFY VLPVLNIDGY IYTWTKSRFW RKTRSTHTGS SCIGTDPNRR FDAGWCEIGA SRNPCDETYC GPAAESEKET KALADFIRNK LSSIKAYLTI HSYSQMMIYP YSYAYKLGEM NAELNALAKA TVKELASLHG TKYTYGPGAT TIYPAAAGGSD DWAYDQGIRY SFTFELRDTG RYGFLLPESQ IRATCEETFL AIKYVASYVL EHLV

## Product Details

---

Clone:	4D5
Isotype:	IgG2a
Cross-Reactivity:	Human
Characteristics:	Antibody Reactive Against Recombinant Protein.

## Target Details

---

Target:	CPB1
Alternative Name:	CPB1 ( <a href="#">CPB1 Products</a> )
Background:	Full Gene Name: carboxypeptidase B1 (tissue) Synonyms: DKFZp779K1333,PASP,PCPB
Gene ID:	1360

## Application Details

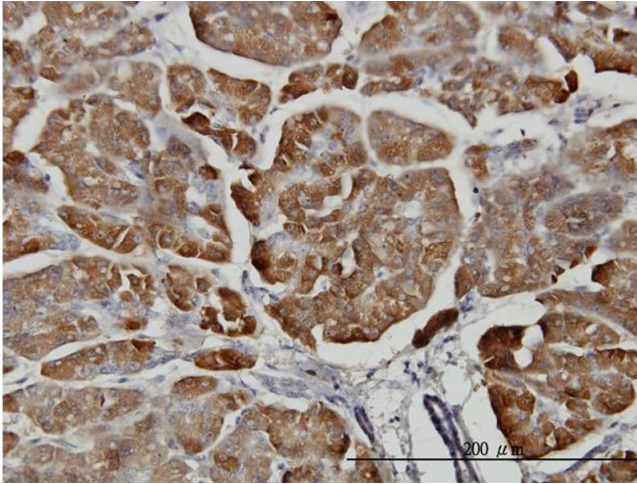
---

Application Notes:	Optimal working dilution should be determined by the investigator.
Restrictions:	For Research Use only

## Handling

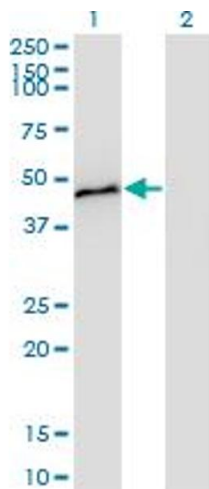
---

Buffer:	In 1x PBS, pH 7.4
Handling Advice:	Aliquot to avoid repeated freezing and thawing.
Storage:	-20 °C
Storage Comment:	Store at -20°C or lower. Aliquot to avoid repeated freezing and thawing.



### Immunostaining

**Image 1.** Immunoperoxidase of monoclonal antibody to CPB1 on formalin-fixed paraffin-embedded human pancreas. [antibody concentration 3 ug/ml]

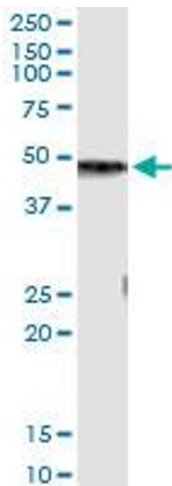


### Western Blotting

**Image 2.** Western Blot analysis of CPB1 expression in transfected 293T cell line by CPB1 monoclonal antibody (M01), clone 4D5.

Lane 1: CPB1 transfected lysate(47.4 KDa).

Lane 2: Non-transfected lysate.



### Western Blotting

**Image 3.** Immunoprecipitation of CPB1 transfected lysate using anti-CPB1 monoclonal antibody and Protein A Magnetic Bead , and immunoblotted with CPB1 MaxPab rabbit polyclonal antibody.

Please check the [product details page](#) for more images. Overall 4 images are available for ABIN514553.