



[Go to Product page](#)

Datasheet for ABIN514556
anti-CPB2 antibody (AA 1-423)

2 Images

Overview

Quantity:	100 µL
Target:	CPB2
Binding Specificity:	AA 1-423
Reactivity:	Human
Host:	Rabbit
Clonality:	Polyclonal
Conjugate:	This CPB2 antibody is un-conjugated
Application:	Western Blotting (WB), Immunoprecipitation (IP)

Product Details

Purpose:	Rabbit polyclonal antibody raised against a full-length human CPB2 protein.
Immunogen:	CPB2 (NP_001863.2, 1 a.a. ~ 423 a.a) full-length human protein.
Sequence:	MKLCSLAVLV PIVLFCEQHV FAFQSGQVLA ALPRTSRQVQ VLQNLTTTYE IVLWQPVTAD LIVKKKQVHF FVNASDVDNV KAHLNVSGIP CSVLLADVED LIQQQISNDT VSPRASASY EQYHSLNEIY SWIEFITERH PDMLTKIHIG SSFEKYPLYV LKVSGKEQAA KNAIWIDCGI HAREWISPAF CLWFIGHTQ FYGIIGQYTN LLRLVDFYVM PVVNVGDYDY SWKKNRMWRK NRSFYANNHC IGTDLNRNFA SKHWCEEGAS SSSCSETYCG LYPESEPEVK AVASFLRRNI NQIKAYISMH SYSQHIVFPY SYTRSKSKDH EELSLVASEA VRAIEKTSKN TRYTHGHGSE TLYLAPGGGD DWIYDLGIKY SFTIELRDTG TYGFLLPERY IKPTCREAFA AVSKIAWHVI RNV
Cross-Reactivity:	Human
Characteristics:	Antibody reactive against mammalian transfected lysate.

Target Details

Target: CPB2

Alternative Name: CPB2 ([CPB2 Products](#))

Background: Full Gene Name: carboxypeptidase B2 (plasma)
Synonyms: CPU,PCPB,TAFI

Gene ID: 1361

Pathways: [Regulation of Actin Filament Polymerization](#), [Carbohydrate Homeostasis](#)

Application Details

Application Notes: Optimal working dilution should be determined by the investigator.

Restrictions: For Research Use only

Handling

Format: Liquid

Buffer: No additive

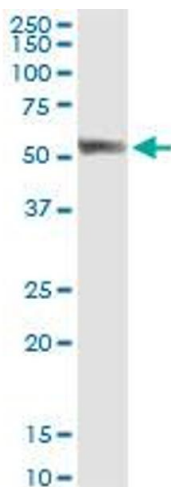
Preservative: Without preservative

Handling Advice: Aliquot to avoid repeated freezing and thawing.

Storage: -20 °C

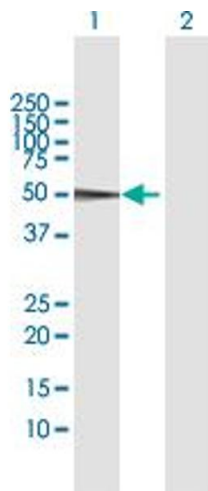
Storage Comment: Store at -20°C or lower. Aliquot to avoid repeated freezing and thawing.

Images



Immunoprecipitation

Image 1. Immunoprecipitation of CPB2 transfected lysate using anti-CPB2 MaxPab rabbit polyclonal antibody and Protein A Magnetic Bead , and immunoblotted with CPB2 purified MaxPab mouse polyclonal antibody (B01P) .



Western Blotting

Image 2. Western Blot analysis of CPB2 expression in transfected 293T cell line by CPB2 MaxPab polyclonal antibody.

Lane 1: CPB2 transfected lysate(48.4 kDa).

Lane 2: Non-transfected lysate.