



[Go to Product page](#)

Datasheet for ABIN514571  
**anti-CPT2 antibody (AA 1-658)**

2 Images

Overview

Quantity:	100 µg
Target:	CPT2
Binding Specificity:	AA 1-658
Reactivity:	Human
Host:	Rabbit
Clonality:	Polyclonal
Conjugate:	This CPT2 antibody is un-conjugated
Application:	Western Blotting (WB)

Product Details

Purpose:	Rabbit polyclonal antibody raised against a full-length human CPT2 protein.
Immunogen:	CPT2 (AAH02445.1, 1 a.a. ~ 658 a.a) full-length human protein.
Sequence:	MVPRLLLRW PRGPAVGPGA PSRPLSAGSG PGQYLQRSIV PTMHYQDQLP RLPKPLEDT IRRYLSAQKP LLNDGQFRKT EQFCKSFENG IGKELHEQLV ALDKQNKHTS YILGPWFDMY LSARDSVVLN FNPFFMAFNPDKSEYNDQLT RATNMTVSAI RFLKTLRAGL LEPEVFHLNP AKSDTITFKR LIRFVPSLS WYGAYLVNAY PLDMSQYFRL FNSTRLPKPS RDELFTDDKA RHLLVLRKGN FYIFDVLDDQD GNIVSPSEIQ AHLKYILSDS SPAPEFPLAY LTSENEDIWA ELRQKLMSSG NEESLRKVDS AVFCLCLDDF PIKDLVHLSH NMLHGDGTNR WFDKSFNLII AKDGSTAIHF EHSWGDGVAV LRFNEVFKD STQTPAVTPQ SQPATDSTV TVQKLNFEFT DALKTGITAA KEKFDATMKT LTIDCVQFQR GGKEFLKKQK LSPDAVAQLA FQMAFLRQYG QTVATYESCS TAAFKHGRTE TIRPASVYTK RCSEAFVREP SRHSAGELQQ MMVECSKYHG QLTKEAAMGQ GFDRHLFALR HLAALKGIIL PELYLDPAYG QINHNLVSTS TLSSPAVNLG

## Product Details

---

GFAPVWSDGF GVGYAVHDNW IGCNVSSYPG RNAREFLQCV EKALEDVFDA LEGKSIKS

---

Cross-Reactivity: Human, Mouse

---

Characteristics: Antibody reactive against mammalian transfected lysate.

---

## Target Details

---

Target: CPT2

---

Alternative Name: CPT2 ([CPT2 Products](#))

---

Background: Full Gene Name: carnitine palmitoyltransferase II  
Synonyms: CPT1,CPTASE

---

Gene ID: 1376

---

Pathways: [Regulation of Lipid Metabolism by PPARalpha](#), [Monocarboxylic Acid Catabolic Process](#)

---

## Application Details

---

Application Notes: Optimal working dilution should be determined by the investigator.

---

Restrictions: For Research Use only

---

## Handling

---

Buffer: In 1x PBS, pH 7.4

---

Handling Advice: Aliquot to avoid repeated freezing and thawing.

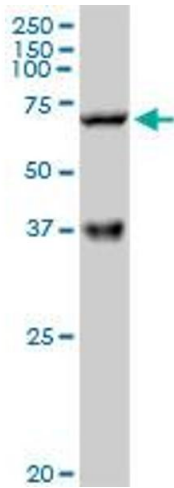
---

Storage: -20 °C

---

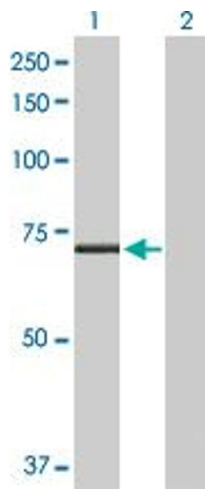
Storage Comment: Store at -20°C or lower. Aliquot to avoid repeated freezing and thawing.

---



#### Western Blotting

**Image 1.** CPT2 MaxPab rabbit polyclonal antibody. Western Blot analysis of CPT2 expression in mouse kidney.



#### Western Blotting

**Image 2.** Western Blot analysis of CPT2 expression in transfected 293T cell line by CPT2 MaxPab polyclonal antibody.

Lane 1: CPT2 transfected lysate(73.80 KDa).

Lane 2: Non-transfected lysate.