



[Go to Product page](#)

Datasheet for ABIN514572  
**anti-CPT2 antibody (AA 351-450)**

1 Image

Overview

Quantity:	100 µg
Target:	CPT2
Binding Specificity:	AA 351-450
Reactivity:	Human
Host:	Mouse
Clonality:	Monoclonal
Conjugate:	This CPT2 antibody is un-conjugated
Application:	ELISA

Product Details

Purpose:	Mouse monoclonal antibody raised against a partial recombinant CPT2.
Immunogen:	CPT2 (AAH05172, 351 a.a. ~ 450 a.a) partial recombinant protein with GST tag. MW of the GST tag alone is 26 KDa.
Sequence:	WFDKSFNLII AKDGSTAVHF EHSWGDGVAV LRFNEVFKD STQTPAVTPQ SQPATTDSTV TVQKLNFEELT DALKTGITAA KEKFDATMKT LTIDCVQFQR
Clone:	1E10
Isotype:	IgG2a
Cross-Reactivity:	Human
Characteristics:	Antibody Reactive Against Recombinant Protein.

## Target Details

Target:	CPT2
Alternative Name:	CPT2 ( <a href="#">CPT2 Products</a> )
Background:	Full Gene Name: carnitine palmitoyltransferase II Synonyms: CPT1,CPTASE
Gene ID:	1376
Pathways:	<a href="#">Regulation of Lipid Metabolism by PPARalpha, Monocarboxylic Acid Catabolic Process</a>

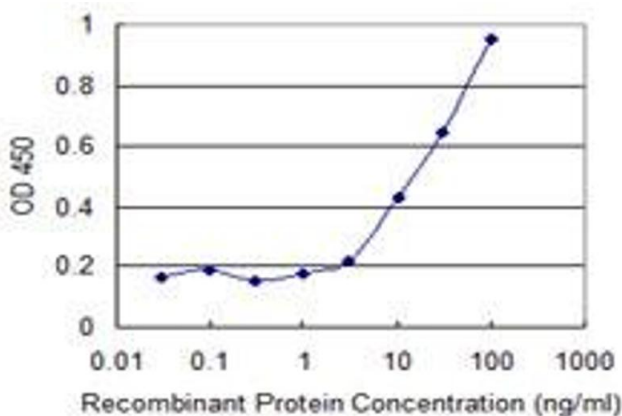
## Application Details

Application Notes:	Optimal working dilution should be determined by the investigator.
Restrictions:	For Research Use only

## Handling

Buffer:	In 1x PBS, pH 7.4
Handling Advice:	Aliquot to avoid repeated freezing and thawing.
Storage:	-20 °C
Storage Comment:	Store at -20°C or lower. Aliquot to avoid repeated freezing and thawing.

## Images



### ELISA

**Image 1.** Detection limit for recombinant GST tagged CPT2 is 0.3 ng/ml as a capture antibody.