

Datasheet for ABIN514578
anti-CREB1 antibody (AA 14-101)



[Go to Product page](#)

3 Images

Overview

Quantity:	100 µg
Target:	CREB1
Binding Specificity:	AA 14-101
Reactivity:	Human
Host:	Mouse
Clonality:	Monoclonal
Conjugate:	This CREB1 antibody is un-conjugated
Application:	Western Blotting (WB), ELISA

Product Details

Purpose:	Mouse monoclonal antibody raised against a partial recombinant CREB1.
Immunogen:	CREB1 (AAH10636.1, 14 a.a. ~ 101 a.a) partial recombinant protein with GST tag. MW of the GST tag alone is 26 KDa.
Sequence:	DAAVTEAENQ QMTVQAQPQI ATLAQVSMMPA AHATSSAPT V TLVQLPNGQT VQVHGVIQAA QPSVIQSPQV QTVQSSCKDL KRLFSGTQ
Clone:	2B2
Isotype:	IgG2a
Cross-Reactivity:	Human
Characteristics:	Antibody Reactive Against Recombinant Protein.

Target Details

Target:	CREB1
Alternative Name:	CREB1 (CREB1 Products)
Background:	Full Gene Name: cAMP responsive element binding protein 1 Synonyms: CREB,MGC9284
Gene ID:	1385
Pathways:	TLR Signaling, Fc-epsilon Receptor Signaling Pathway, EGFR Signaling Pathway, Neurotrophin Signaling Pathway, Thyroid Hormone Synthesis, Activation of Innate immune Response, Myometrial Relaxation and Contraction, Regulation of Cell Size, Toll-Like Receptors Cascades, G-protein mediated Events, Interaction of EGFR with phospholipase C-gamma, Positive Regulation of fat Cell Differentiation

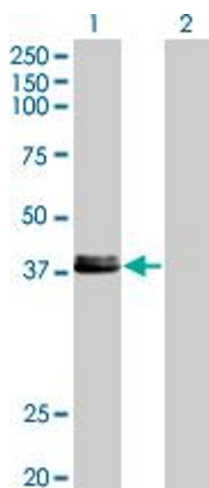
Application Details

Application Notes:	Optimal working dilution should be determined by the investigator.
Restrictions:	For Research Use only

Handling

Buffer:	In 1x PBS, pH 7.4
Handling Advice:	Aliquot to avoid repeated freezing and thawing.
Storage:	-20 °C
Storage Comment:	Store at -20°C or lower. Aliquot to avoid repeated freezing and thawing.

Images

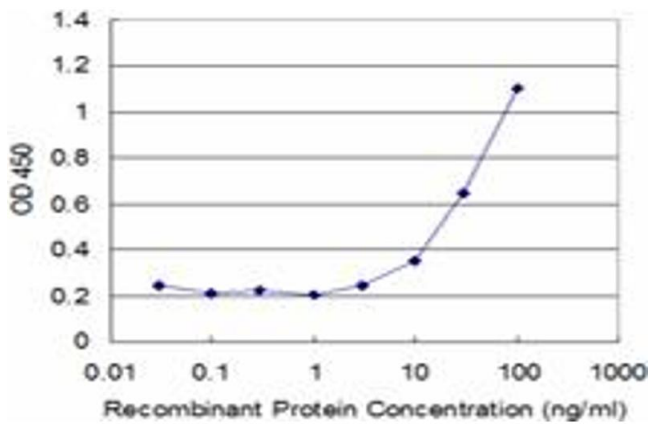


Western Blotting

Image 1. Western Blot analysis of CREB1 expression in transfected 293T cell line by CREB1 monoclonal antibody (M08), clone 2B2.

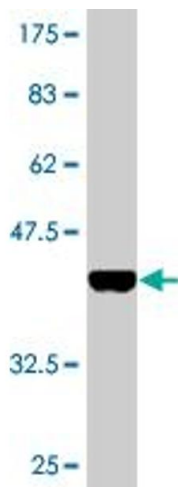
Lane 1: CREB1 transfected lysate(35.1 KDa).

Lane 2: Non-transfected lysate.



ELISA

Image 2. Detection limit for recombinant GST tagged CREB1 is approximately 3ng/ml as a capture antibody.



Western Blotting

Image 3. Western Blot detection against Immunogen (35.31 kDa).