



[Go to Product page](#)

Datasheet for ABIN514584

anti-ATF2 antibody (AA 91-190)

4 Images

Overview

Quantity:	100 µg
Target:	ATF2
Binding Specificity:	AA 91-190
Reactivity:	Human
Host:	Mouse
Clonality:	Monoclonal
Conjugate:	This ATF2 antibody is un-conjugated
Application:	Western Blotting (WB), ELISA, Immunofluorescence (IF), Proximity Ligation Assay (PLA)

Product Details

Purpose:	Mouse monoclonal antibody raised against a partial recombinant ATF2.
Immunogen:	ATF2 (NP_001871.2, 91 a.a. ~ 190 a.a) partial recombinant protein with GST tag. MW of the GST tag alone is 26 KDa.
Sequence:	PFENEFKKAS EDDIKKMLPD LSPLATPIIR SKIEEPSVVE TTHQDSPLPH PESTTSDEKE VPLAQAQPT SAIVRPASLQ VPNVLLTSSD SSVIIQQAVP
Clone:	1C2
Isotype:	IgG2a
Cross-Reactivity:	Human
Characteristics:	Antibody Reactive Against Recombinant Protein.

Target Details

Target:	ATF2
Alternative Name:	ATF2 (ATF2 Products)
Background:	Full Gene Name: activating transcription factor 2 Synonyms: CRE-BP1,CREB2,HB16,MGC111558,TREB7
Gene ID:	1386
NCBI Accession:	NM_001880
Pathways:	MAPK Signaling , RTK Signaling , Thyroid Hormone Synthesis , Activation of Innate immune Response , Chromatin Binding , Myometrial Relaxation and Contraction , Synaptic Membrane, Tube Formation , Toll-Like Receptors Cascades

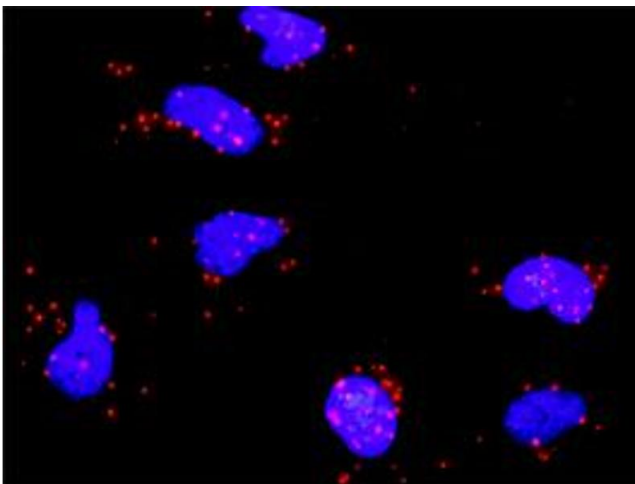
Application Details

Application Notes:	Optimal working dilution should be determined by the investigator.
Restrictions:	For Research Use only

Handling

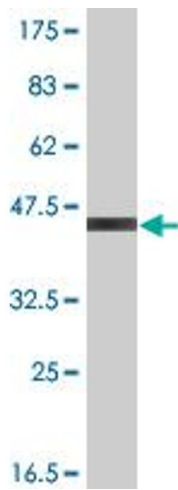
Buffer:	In 1x PBS, pH 7.4
Handling Advice:	Aliquot to avoid repeated freezing and thawing.
Storage:	-20 °C
Storage Comment:	Store at -20°C or lower. Aliquot to avoid repeated freezing and thawing.

Images



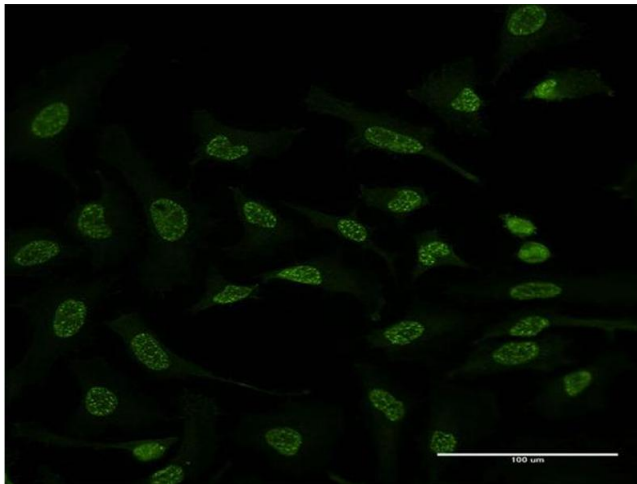
Proximity Ligation Assay

Image 1. Proximity Ligation Analysis of protein-protein interactions between RPS6KA5 and ATF2. HeLa cells were stained with anti-RPS6KA5 rabbit purified polyclonal 1:1200 and anti-ATF2 mouse monoclonal antibody 1:50. Each red dot represents the detection of protein-protein interaction complex, and nuclei were counterstained with DAPI (blue).



Western Blotting

Image 2. Western Blot detection against Immunogen (36.63 KDa).



Immunofluorescence

Image 3. Immunofluorescence of monoclonal antibody to ATF2 on HeLa cell. [antibody concentration 10 ug/ml]

Please check the [product details page](#) for more images. Overall 4 images are available for ABIN514584.