

Datasheet for ABIN514587
anti-CREBL2 antibody (AA 1-120)[Go to Product page](#)

1 Image

Overview

Quantity:	50 µL
Target:	CREBL2
Binding Specificity:	AA 1-120
Reactivity:	Human
Host:	Mouse
Clonality:	Polyclonal
Conjugate:	This CREBL2 antibody is un-conjugated
Application:	Western Blotting (WB)

Product Details

Purpose:	Mouse polyclonal antibody raised against a full-length human CREBL2 protein.
Immunogen:	CREBL2 (NP_001301.1, 1 a.a. ~ 120 a.a) full-length human protein.
Sequence:	MDDSKVVG GK VKKPGKRGRK PAKIDLKAKL ERSRQSAREC RARKKLRYQY LEELVSSRER AICALREELE MYKQWCMAMD QGKIPSEIKA LLTGEEQNKS QQNSSRHTKA GKTDANSNSW
Cross-Reactivity:	Human
Characteristics:	Antibody reactive against mammalian transfected lysate.

Target Details

Target:	CREBL2
Alternative Name:	CREBL2 (CREBL2 Products)

Target Details

Background:	Full Gene Name: cAMP responsive element binding protein-like 2 Synonyms: MGC117311,MGC138362
Gene ID:	1389
NCBI Accession:	NM_001310
Pathways:	Positive Regulation of fat Cell Differentiation

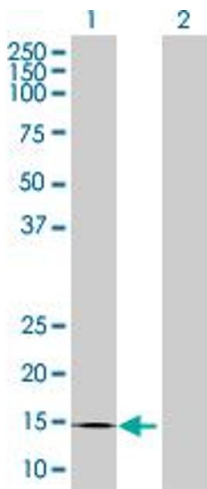
Application Details

Application Notes:	Optimal working dilution should be determined by the investigator.
Restrictions:	For Research Use only

Handling

Format:	Liquid
Buffer:	No additive
Preservative:	Without preservative
Handling Advice:	Aliquot to avoid repeated freezing and thawing.
Storage:	-20 °C
Storage Comment:	Store at -20°C or lower. Aliquot to avoid repeated freezing and thawing.

Images



Western Blotting

Image 1. Western Blot analysis of CREBL2 expression in transfected 293T cell line by CREBL2 MaxPab polyclonal antibody.

Lane 1: CREBL2 transfected lysate(13.2 KDa).

Lane 2: Non-transfected lysate.