

Datasheet for ABIN514615
anti-CRX antibody (AA 1-299)



[Go to Product page](#)

3 Images

Overview

Quantity:	100 µg
Target:	CRX
Binding Specificity:	AA 1-299
Reactivity:	Human
Host:	Mouse
Clonality:	Monoclonal
Conjugate:	This CRX antibody is un-conjugated
Application:	Western Blotting (WB), ELISA, Immunofluorescence (IF)

Product Details

Purpose:	Mouse monoclonal antibody raised against a full-length recombinant CRX.
Immunogen:	CRX (AAH16664, 1 a.a. ~ 299 a.a) full-length recombinant protein with GST tag. MW of the GST tag alone is 26 KDa.
Sequence:	MMAYMNPGRP YSVNALALSG PSVDLMHQAV PYPSAPRKQR RERTTFTRSQ LEELEALFAK TQYPDVYARE EVALKINLPE SRVQVWFKNR RAKCRQQRQQ QKQQQPPGG QAKARPAKRK AGTSPRPSTD VCPDPLGISD SYSPPLPGPS GSPTTAVATV SIWSPASESP LPEAQRAGLV ASGSLTSAP YAMTYAPASA FCSSPSAYGS PSSYFSGLDY YLSPMVPQLG GPALSPLSGP SVGPSLAQSP TSLSGQSYGA YSPVDSLEFK DPTGTWKFTY NPMDPLDYKD QSAWKFQIL
Clone:	4A12
Isotype:	IgG2b
Cross-Reactivity:	Human

Product Details

Characteristics: Antibody Reactive Against Recombinant Protein.

Target Details

Target: CRX

Alternative Name: CRX ([CRX Products](#))

Background: Full Gene Name: cone-rod homeobox
Synonyms: CORD2,CRD,LCA7,OTX3

Gene ID: 1406

Application Details

Application Notes: Optimal working dilution should be determined by the investigator.

Restrictions: For Research Use only

Handling

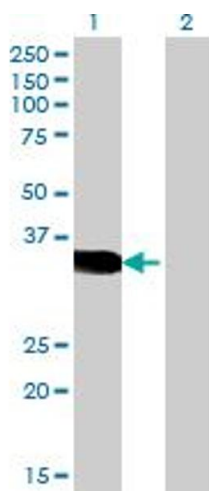
Buffer: In 1x PBS, pH 7.4

Handling Advice: Aliquot to avoid repeated freezing and thawing.

Storage: -20 °C

Storage Comment: Store at -20°C or lower. Aliquot to avoid repeated freezing and thawing.

Images

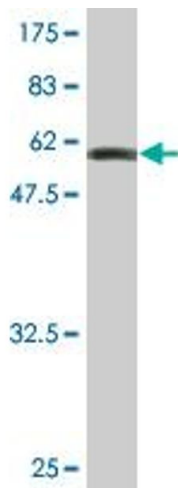


Western Blotting

Image 1. Western Blot analysis of CRX expression in transfected 293T cell line by CRX monoclonal antibody (M06), clone 4A12.

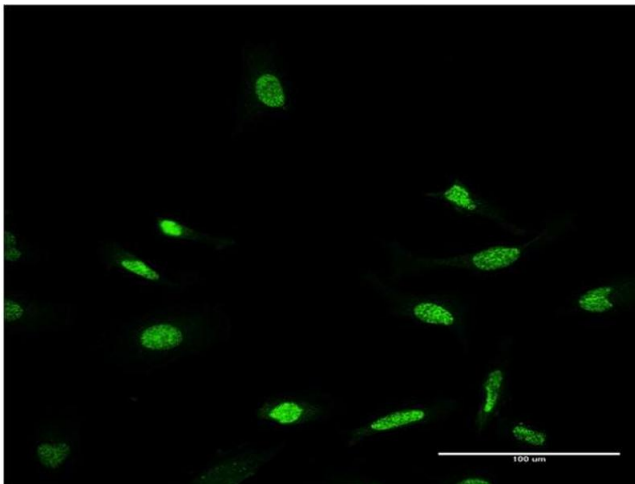
Lane 1: CRX transfected lysate(32.3 KDa).

Lane 2: Non-transfected lysate.



Western Blotting

Image 2. Western Blot detection against Immunogen (58.63 kDa).



Immunofluorescence

Image 3. Immunofluorescence of monoclonal antibody to CRX on HeLa cell. [antibody concentration 10 μg/ml]