

Datasheet for ABIN514620
anti-CRY2 antibody (AA 141-231)



[Go to Product page](#)

3 Images

Overview

Quantity:	100 µg
Target:	CRY2
Binding Specificity:	AA 141-231
Reactivity:	Human
Host:	Mouse
Clonality:	Monoclonal
Conjugate:	This CRY2 antibody is un-conjugated
Application:	Western Blotting (WB), ELISA, Immunofluorescence (IF)

Product Details

Purpose:	Mouse monoclonal antibody raised against a partial recombinant CRY2.
Immunogen:	CRY2 (NP_066940.1, 141 a.a. ~ 231 a.a) partial recombinant protein with GST tag. MW of the GST tag alone is 26 KDa.
Sequence:	VEVVTENSHT LYDLDRIIEL NGQKPPLTYK RFQAIISRME LPKKPVGLVT SQQMESCRAE IQENHDETYG VPSLEELGFP TEGLGPAVWQ G
Clone:	3H4
Isotype:	IgG2a
Cross-Reactivity:	Human
Characteristics:	Antibody Reactive Against Recombinant Protein.

Target Details

Target:	CRY2
Alternative Name:	CRY2 (CRY2 Products)
Background:	Full Gene Name: cryptochrome 2 (photolyase-like) Synonyms: FLJ10332,HCRY2,KIAA0658,PHLL2
Gene ID:	1408
NCBI Accession:	NM_021117
Pathways:	Response to Water Deprivation, Protein targeting to Nucleus

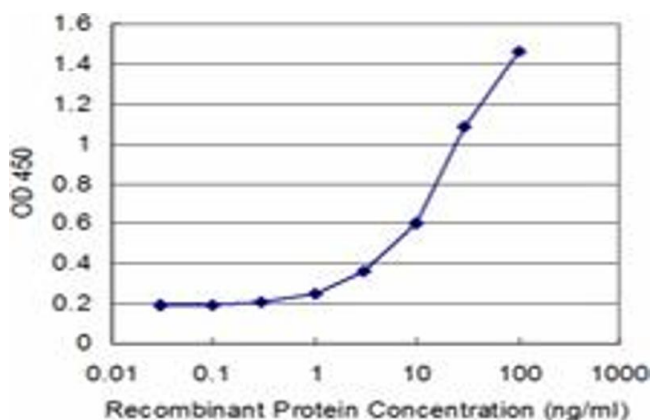
Application Details

Application Notes:	Optimal working dilution should be determined by the investigator.
Restrictions:	For Research Use only

Handling

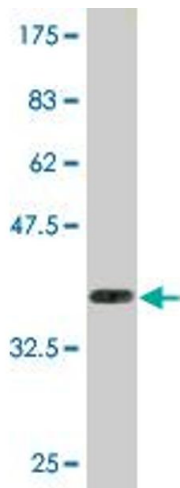
Buffer:	In 1x PBS, pH 7.4
Handling Advice:	Aliquot to avoid repeated freezing and thawing.
Storage:	-20 °C
Storage Comment:	Store at -20°C or lower. Aliquot to avoid repeated freezing and thawing.

Images



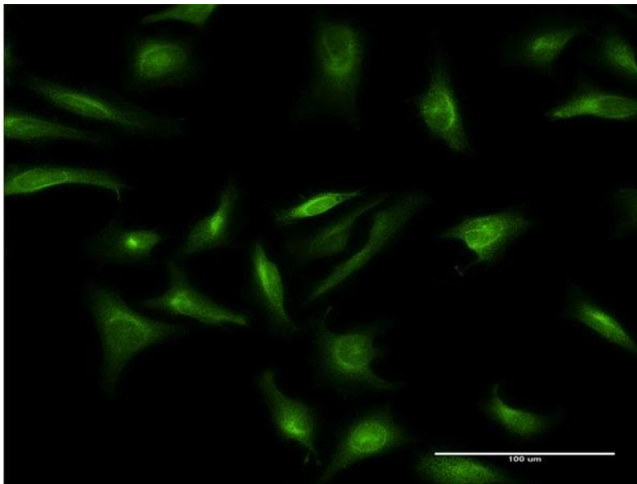
ELISA

Image 1. Detection limit for recombinant GST tagged CRY2 is approximately 1 ng/ml as a capture antibody.



Western Blotting

Image 2. Western Blot detection against Immunogen (35.75 kDa).



Immunofluorescence

Image 3. Immunofluorescence of monoclonal antibody to CRY2 on HeLa cell. [antibody concentration 10 ug/ml]