

Datasheet for ABIN514627  
**anti-CRYbA2 antibody (AA 1-197)**



[Go to Product page](#)

2 Images

## Overview

Quantity:	50 µg
Target:	CRYbA2
Binding Specificity:	AA 1-197
Reactivity:	Human
Host:	Mouse
Clonality:	Polyclonal
Conjugate:	This CRYbA2 antibody is un-conjugated
Application:	Western Blotting (WB)

## Product Details

Purpose:	Mouse polyclonal antibody raised against a full-length human CRYBA2 protein.
Immunogen:	CRYBA2 (NP_005200.1, 1 a.a. ~ 197 a.a) full-length human protein.
Sequence:	MSSAPAPGPA PASLTLWDEE DFQGRRCRLL SDCANVCERG GLPRVRSVKV ENGVWVAFEY PDFQGQQFIL EKGDYPRWSA WSGSSSHNSN QLLSFRPVLC ANHNSRVTL FEGDNFQGCK FDLVDDYPSL PSMGWASKDV GSLKVSSGAW VAYQYPGYRG YQYVLERDRH SGEFCTYGEL GTQAHTGQLQ SIRRVQH
Cross-Reactivity:	Human
Characteristics:	Antibody reactive against mammalian transfected lysate.

## Target Details

Target:	CRYbA2
---------	--------

## Target Details

Alternative Name:	CRYBA2 (CRYbA2 Products)
Background:	Full Gene Name: crystallin, beta A2 Synonyms:
Gene ID:	1412
NCBI Accession:	NM_005209

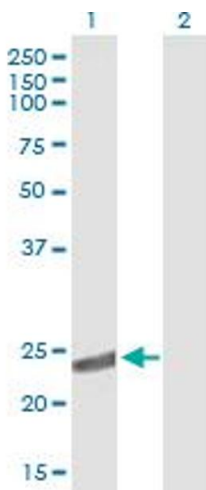
## Application Details

Application Notes:	Optimal working dilution should be determined by the investigator.
Restrictions:	For Research Use only

## Handling

Buffer:	In 1x PBS, pH 7.4
Handling Advice:	Aliquot to avoid repeated freezing and thawing.
Storage:	-20 °C
Storage Comment:	Store at -20°C or lower. Aliquot to avoid repeated freezing and thawing.

## Images

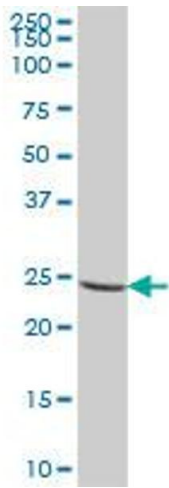


### Western Blotting

**Image 1.** Western Blot analysis of CRYBA2 expression in transfected 293T cell line by CRYBA2 MaxPab polyclonal antibody.

Lane 1: CRYBA2 transfected lysate(21.67 kDa).

Lane 2: Non-transfected lysate.



### Western Blotting

**Image 2.** CRYBA2 MaxPab polyclonal antibody. Western Blot analysis of CRYBA2 expression in human spleen.