

Datasheet for ABIN514628  
**anti-CRYbA2 antibody (AA 94-193)**



[Go to Product page](#)

1 Image

## Overview

Quantity:	100 µg
Target:	CRYbA2
Binding Specificity:	AA 94-193
Reactivity:	Human
Host:	Mouse
Clonality:	Monoclonal
Conjugate:	This CRYbA2 antibody is un-conjugated
Application:	ELISA

## Product Details

Purpose:	Mouse monoclonal antibody raised against a partial recombinant CRYBA2.
Immunogen:	CRYBA2 (NP_005200.1, 94 a.a. ~ 193 a.a) partial recombinant protein with GST tag. MW of the GST tag alone is 26 KDa.
Sequence:	SFRPVLCA <sup>NH</sup> NDSRVTLFEG DNFQGCKFDL VDDYPSLPSM GWASKDVGSL KVSSGAWWAY QYPGYRGYQY VLERDRHSGE FCTYGELGTQ AHTGQLQSIR
Clone:	2G9
Isotype:	IgG2a
Cross-Reactivity:	Human
Characteristics:	Antibody Reactive Against Recombinant Protein.

## Target Details

Target:	CRYbA2
Alternative Name:	CRYBA2 ( <a href="#">CRYbA2 Products</a> )
Background:	Full Gene Name: crystallin, beta A2 Synonyms:
Gene ID:	1412
NCBI Accession:	<a href="#">NM_005209</a>

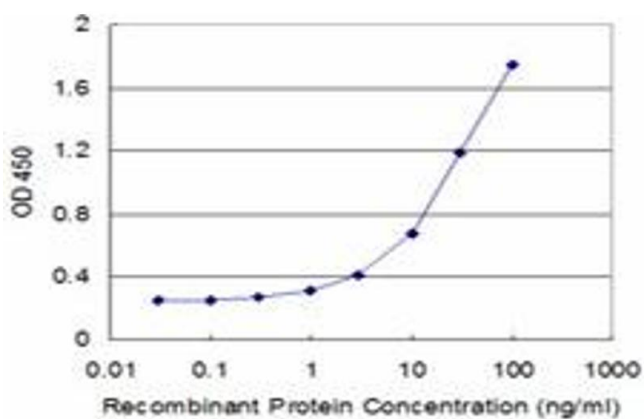
## Application Details

Application Notes:	Optimal working dilution should be determined by the investigator.
Restrictions:	For Research Use only

## Handling

Buffer:	In 1x PBS, pH 7.4
Handling Advice:	Aliquot to avoid repeated freezing and thawing.
Storage:	-20 °C
Storage Comment:	Store at -20°C or lower. Aliquot to avoid repeated freezing and thawing.

## Images



### ELISA

**Image 1.** Detection limit for recombinant GST tagged CRYBA2 is approximately 1ng/ml as a capture antibody.