

Datasheet for ABIN514652
anti-MAPK14 antibody (AA 1-360)



[Go to Product page](#)

3 Images

Overview

Quantity:	100 µg
Target:	MAPK14
Binding Specificity:	AA 1-360
Reactivity:	Human
Host:	Rabbit
Clonality:	Polyclonal
Conjugate:	This MAPK14 antibody is un-conjugated
Application:	Western Blotting (WB), Proximity Ligation Assay (PLA)

Product Details

Purpose:	Rabbit polyclonal antibody raised against a full-length human MAPK14 protein.
Immunogen:	MAPK14 (NP_620581.1, 1 a.a. ~ 360 a.a) full-length human protein.
Sequence:	MSQERPTFYR QELNKTIWEV PERYQNLSPV GSGAYGSVCA AFDTKTGLRV AVKKLSRPFQ SIIHAKRTYR ELRLLKHMKH ENVIGLLDVF TPARSLEEFN DVYLVTHLMG ADLNNIVKQC KLTDHVVQFL IYQILRGLKY IHSADIIHRD LKPSNLAVNE DCELKILDFG LARHTDDEMT GYVATR WYRA PEIMLNWMHY NQTVDIWSVG CIMAELLTGR TLFPGTDHID QLKILRLVVG TPGAELLKKI SSESARNYIQ SLTQMPKMNF ANVFIGANPL AVDLLEKMLV LQSDKRITAA QALAHAYFAQ YHDPDDEPVA DPYDQSFESR DLLIDEWKSL TYDEVISFVP PPLDQEEMES
Cross-Reactivity:	Human
Characteristics:	Antibody reactive against mammalian transfected lysate.

Target Details

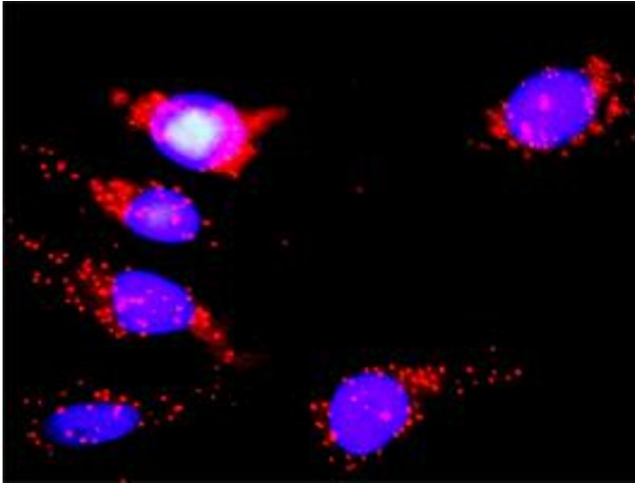
Target:	MAPK14
Alternative Name:	MAPK14 (MAPK14 Products)
Background:	Full Gene Name: mitogen-activated protein kinase 14 Synonyms: CSBP1,CSBP2,CSPB1,EXIP,Mxi2,PRKM14,PRKM15,RK,SAPK2A,p38,p38ALPHA
Gene ID:	1432
NCBI Accession:	NM_139012
Pathways:	MAPK Signaling , Neurotrophin Signaling Pathway , Activation of Innate immune Response , Cellular Response to Molecule of Bacterial Origin , Regulation of Muscle Cell Differentiation , Regulation of Cell Size , Hepatitis C , Toll-Like Receptors Cascades , Autophagy , Thromboxane A2 Receptor Signaling , BCR Signaling , S100 Proteins

Application Details

Application Notes:	Optimal working dilution should be determined by the investigator.
Restrictions:	For Research Use only

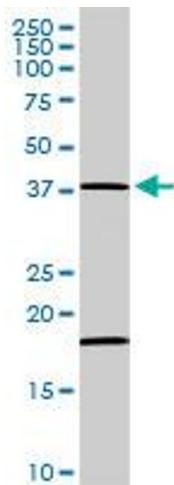
Handling

Buffer:	In 1x PBS, pH 7.4
Handling Advice:	Aliquot to avoid repeated freezing and thawing.
Storage:	-20 °C
Storage Comment:	Store at -20°C or lower. Aliquot to avoid repeated freezing and thawing.



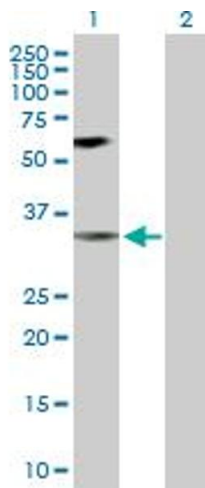
Proximity Ligation Assay

Image 1. Proximity Ligation Analysis of protein-protein interactions between MAPK14 and EGFR. HeLa cells were stained with anti-MAPK14 rabbit purified polyclonal 1:1200 and anti-EGFR mouse purified polyclonal antibody 1:50. Each red dot represents the detection of protein-protein interaction complex, and nuclei were counterstained with DAPI (blue).



Western Blotting

Image 2. MAPK14 MaxPab rabbit polyclonal antibody. Western Blot analysis of MAPK14 expression in human placenta.



Western Blotting

Image 3. Western Blot analysis of MAPK14 expression in transfected 293T cell line by MAPK14 MaxPab polyclonal antibody.

Lane 1: MAPK14 transfected lysate(41.30 KDa).

Lane 2: Non-transfected lysate.