

Datasheet for ABIN514653
anti-MAPK14 antibody (AA 260-360)

7 Images

[Go to Product page](#)

Overview

Quantity:	100 µg
Target:	MAPK14
Binding Specificity:	AA 260-360
Reactivity:	Human
Host:	Mouse
Clonality:	Monoclonal
Conjugate:	This MAPK14 antibody is un-conjugated
Application:	Western Blotting (WB), ELISA, Immunoprecipitation (IP), Immunohistochemistry (Paraffin-embedded Sections) (IHC (p)), Proximity Ligation Assay (PLA)

Product Details

Purpose:	Mouse monoclonal antibody raised against a partial recombinant MAPK14.
Immunogen:	MAPK14 (AAH31574, 260 a.a. ~ 360 a.a) partial recombinant protein with GST tag. MW of the GST tag alone is 26 KDa.
Sequence:	QSLTQMPKMN FANVFIGANP LAVDLLEKML VLDSDKRITA AQALAHAYFA QYHDPDDEPV ADPYDQSFES RDLLIDEWKS LTYDEVISFV PPPLDQEEME S
Clone:	3D5
Isotype:	IgG1
Cross-Reactivity:	Human
Characteristics:	Antibody Reactive Against Recombinant Protein.

Target Details

Target:	MAPK14
Alternative Name:	MAPK14 (MAPK14 Products)
Background:	Full Gene Name: mitogen-activated protein kinase 14 Synonyms: CSBP1,CSBP2,CSPB1,EXIP,Mxi2,PRKM14,PRKM15,RK,SAPK2A,p38,p38ALPHA
Gene ID:	1432
Pathways:	MAPK Signaling , Neurotrophin Signaling Pathway , Activation of Innate immune Response , Cellular Response to Molecule of Bacterial Origin , Regulation of Muscle Cell Differentiation , Regulation of Cell Size , Hepatitis C , Toll-Like Receptors Cascades , Autophagy , Thromboxane A2 Receptor Signaling , BCR Signaling , S100 Proteins

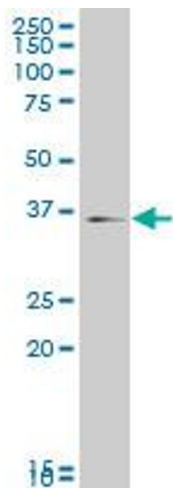
Application Details

Application Notes:	Optimal working dilution should be determined by the investigator.
Restrictions:	For Research Use only

Handling

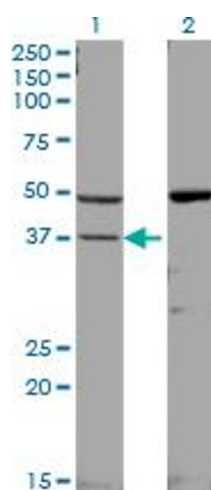
Buffer:	In 1x PBS, pH 7.4
Handling Advice:	Aliquot to avoid repeated freezing and thawing.
Storage:	-20 °C
Storage Comment:	Store at -20°C or lower. Aliquot to avoid repeated freezing and thawing.

Images



Western Blotting

Image 1. MAPK14 monoclonal antibody (M01), clone 3D5
Western Blot analysis of MAPK14 expression in C32 .

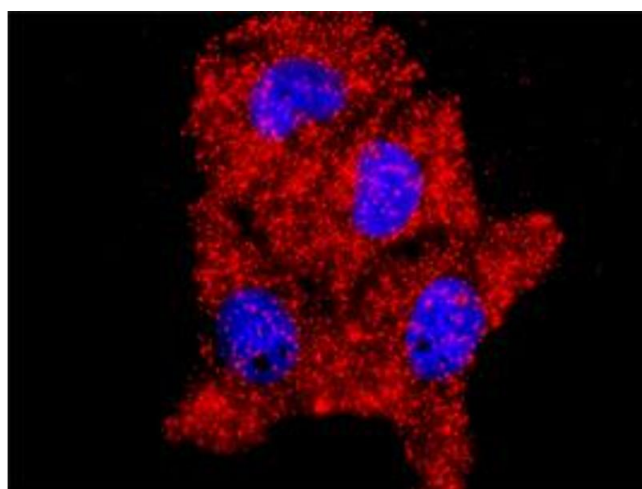


Western Blotting

Image 2. Western Blot analysis of MAPK14 expression in transfected 293T cell line by MAPK14 monoclonal antibody (M01), clone 3D5.

Lane 1: MAPK14 transfected lysate(41.3 KDa).

Lane 2: Non-transfected lysate.



Proximity Ligation Assay

Image 3. Proximity Ligation Analysis of protein-protein interactions between AKT1 and MAPK14. Huh7 cells were stained with anti-AKT1 rabbit purified polyclonal 1:1200 and anti-MAPK14 mouse monoclonal antibody 1:50. Each red dot represents the detection of protein-protein interaction complex, and nuclei were counterstained with DAPI (blue).

Please check the [product details page](#) for more images. Overall 7 images are available for ABIN514653.