



[Go to Product page](#)

Datasheet for ABIN514658
anti-CSF1R antibody (AA 21-120)

4 Images

Overview

Quantity:	100 µg
Target:	CSF1R
Binding Specificity:	AA 21-120
Reactivity:	Human
Host:	Mouse
Clonality:	Monoclonal
Conjugate:	This CSF1R antibody is un-conjugated
Application:	Western Blotting (WB), ELISA, Proximity Ligation Assay (PLA)

Product Details

Purpose:	Mouse monoclonal antibody raised against a partial recombinant CSF1R.
Immunogen:	CSF1R (AAH47521, 21 a.a. ~ 120 a.a) partial recombinant protein with GST tag. MW of the GST tag alone is 26 KDa.
Sequence:	PVIEPSVPEL VVKPGATVTL RCVGNGSVEW DGPPSPHWTL YSDGSSSILS TNNATFQNTG TYRCTEPGDP LGGSAAIHLY VKDPPARPWNV LAQEVVVFED
Clone:	3G12
Isotype:	IgG1
Cross-Reactivity:	Human
Characteristics:	Antibody Reactive Against Recombinant Protein.

Target Details

Target: CSF1R

Alternative Name: CSF1R ([CSF1R Products](#))

Background: Full Gene Name: colony stimulating factor 1 receptor
Synonyms: C-FMS,CD115,CSFR,FIM2,FMS

Gene ID: 1436

Pathways: [RTK Signaling](#), [Inositol Metabolic Process](#), [Cell-Cell Junction Organization](#)

Application Details

Application Notes: Optimal working dilution should be determined by the investigator.

Restrictions: For Research Use only

Handling

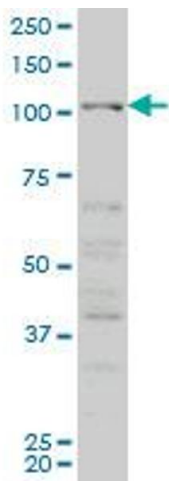
Buffer: In 1x PBS, pH 7.4

Handling Advice: Aliquot to avoid repeated freezing and thawing.

Storage: -20 °C

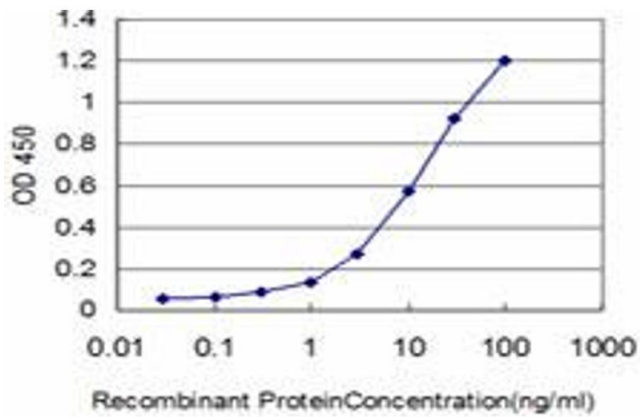
Storage Comment: Store at -20°C or lower. Aliquot to avoid repeated freezing and thawing.

Images



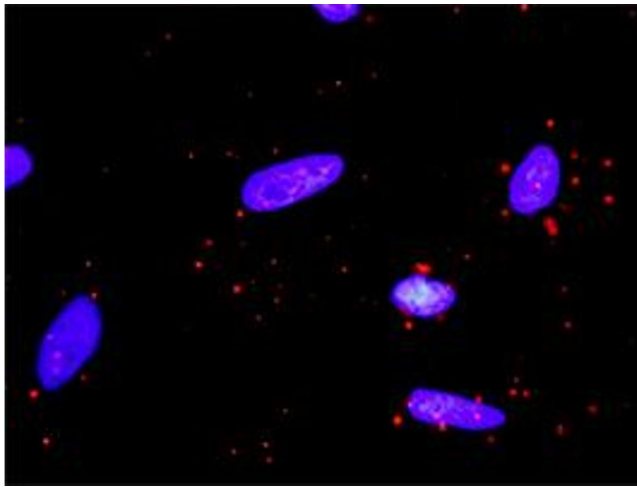
Western Blotting

Image 1. CSF1R monoclonal antibody (M02), clone 3G12
Western Blot analysis of CSF1R expression in HeLa S3 NE .



ELISA

Image 2. Detection limit for recombinant GST tagged CSF1R is approximately 0.3ng/ml as a capture antibody.



Proximity Ligation Assay

Image 3. Proximity Ligation Analysis of protein-protein interactions between PIK3R1 and CSF1R. HeLa cells were stained with anti-PIK3R1 rabbit purified polyclonal 1:1200 and anti-CSF1R mouse monoclonal antibody 1:50. Each red dot represents the detection of protein-protein interaction complex, and nuclei were counterstained with DAPI (blue).

Please check the [product details page](#) for more images. Overall 4 images are available for ABIN514658.