



[Go to Product page](#)

Datasheet for ABIN514679

anti-G-CSF antibody (AA 1-207)

3 Images

Overview

Quantity:	100 µL
Target:	G-CSF (CSF3)
Binding Specificity:	AA 1-207
Reactivity:	Human
Host:	Rabbit
Clonality:	Polyclonal
Conjugate:	This G-CSF antibody is un-conjugated
Application:	Western Blotting (WB), Immunofluorescence (IF), Immunoprecipitation (IP)

Product Details

Purpose:	Rabbit polyclonal antibody raised against a full-length human CSF3 protein.
Immunogen:	CSF3 (NP_000750.1, 1 a.a. ~ 207 a.a) full-length human protein.
Sequence:	MAGPATQSPM KLMA LQ LLLW HSALWTVQEA TPLGPASSLP QSFLKCLEQ VRKIQGDGAA LQEKL VSECA TYKLCHPEEL VLLGHSLGIP WAPLSSCPSQ ALQLAGCLSQ LHSGLFLYQG LLQALEGISP ELGPTLDTLQ LDVADFATTI WQQMEELGMA PALQPTQGAM PAFASAFQRR AGGVLVASHL QSFLEVS YRV LRHLAQP
Cross-Reactivity:	Human
Characteristics:	Antibody reactive against mammalian transfected lysate.

Target Details

Target:	G-CSF (CSF3)
---------	--------------

Target Details

Alternative Name:	CSF3 (CSF3 Products)
Background:	Full Gene Name: colony stimulating factor 3 (granulocyte) Synonyms: G-CSF,GCSF,MGC45931
Gene ID:	1440
NCBI Accession:	NM_000759
Pathways:	Cellular Response to Molecule of Bacterial Origin, Regulation of Actin Filament Polymerization

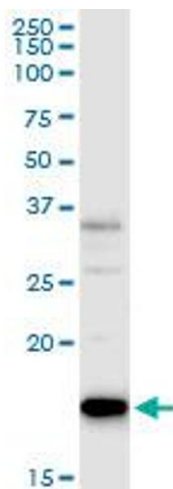
Application Details

Application Notes:	Optimal working dilution should be determined by the investigator.
Restrictions:	For Research Use only

Handling

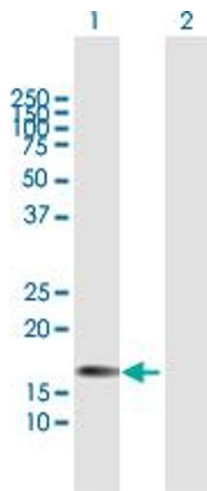
Format:	Liquid
Buffer:	No additive
Preservative:	Without preservative
Handling Advice:	Aliquot to avoid repeated freezing and thawing.
Storage:	-20 °C
Storage Comment:	Store at -20°C or lower. Aliquot to avoid repeated freezing and thawing.

Images



Immunoprecipitation

Image 1. Immunoprecipitation of CSF3 transfected lysate using anti-CSF3 MaxPab rabbit polyclonal antibody and Protein A Magnetic Bead , and immunoblotted with CSF3 purified MaxPab mouse polyclonal antibody (B01P) .

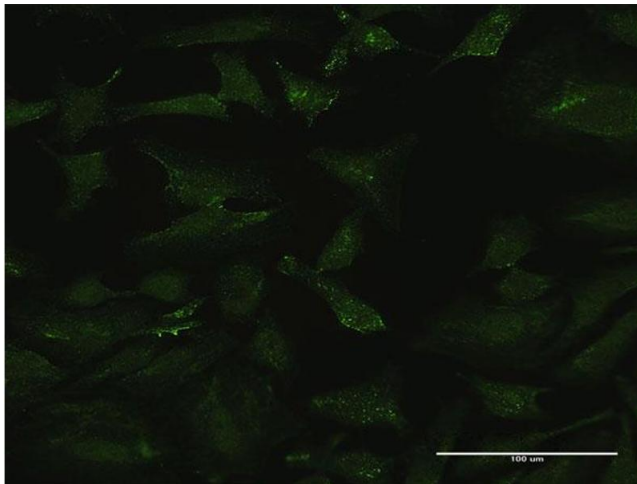


Western Blotting

Image 2. Western Blot analysis of CSF3 expression in transfected 293T cell line by CSF3 MaxPab polyclonal antibody.

Lane 1: CSF3 transfected lysate(22.3 KDa).

Lane 2: Non-transfected lysate.



Immunofluorescence

Image 3. Immunofluorescence of purified MaxPab antibody to CSF3 on HeLa cell. [antibody concentration 10 ug/ml]