

Datasheet for ABIN514699  
**anti-CK1 epsilon antibody (AA 2-100)**

## 2 Images

[Go to Product page](#)

## Overview

|                      |  |
|----------------------|--|
| Quantity:            | 100 µg   |
| Target:              | CK1 epsilon (CSNK1E)   |
| Binding Specificity: | AA 2-100   |
| Reactivity:          | Human  |
| Host:                | Mouse  |
| Clonality:           | Monoclonal   |
| Conjugate:           | This CK1 epsilon antibody is un-conjugated                     |
| Application:         | ELISA, Immunofluorescence (IF), Proximity Ligation Assay (PLA) |

## Product Details

|                   |   |
|-------------------|---|
| Purpose:          | Mouse monoclonal antibody raised against a partial recombinant CSNK1E.  |
| Immunogen:        | CSNK1E (NP_689407, 2 a.a. ~ 100 a.a) partial recombinant protein with GST tag. MW of the GST tag alone is 26 KDa. |
| Sequence:         | ELRVGNKYRL GRKIGSGSFG DIYLGANIAS GEEVAIKLEC VKTKHPQLHI ESKFYKMMQG<br>GVGIPSIKWC GAEGDYNVMV MELLGPSLED LFNFCSRKF   |
| Clone:            | 2E1   |
| Isotype:          | IgG2a   |
| Cross-Reactivity: | Human   |
| Characteristics:  | Antibody Reactive Against Recombinant Protein.  |

## Target Details

|                   |  |
|-------------------|--|
| Target:           | CK1 epsilon (CSNK1E)   |
| Alternative Name: | CSNK1E ( <a href="#">CSNK1E Products</a> )                           |
| Background:       | Full Gene Name: casein kinase 1, epsilon<br>Synonyms: HCKIE,MGC10398 |
| Gene ID:          | 1454   |
| NCBI Accession:   | <a href="#">NM_152221</a>  |
| Pathways:         | <a href="#">Hedgehog Signaling, M Phase</a>                          |

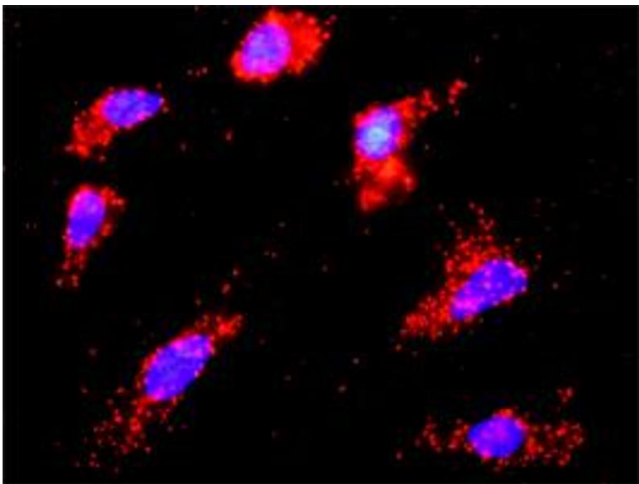
## Application Details

|                    |  |
|--------------------|--|
| Application Notes: | Optimal working dilution should be determined by the investigator. |
| Restrictions:      | For Research Use only  |

## Handling

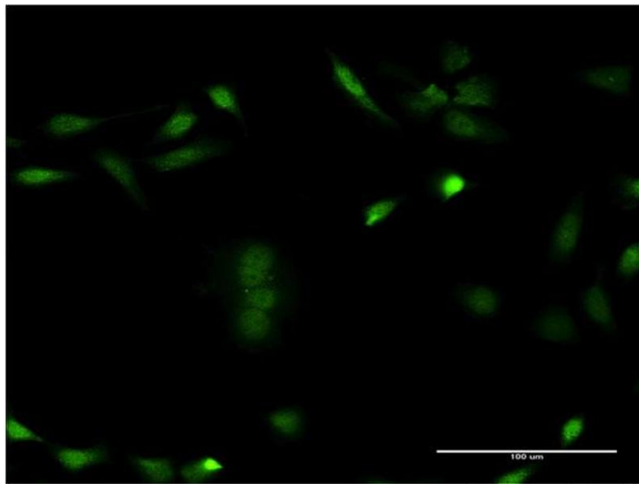
|                  |  |
|------------------|--|
| Buffer:          | In 1x PBS, pH 7.4  |
| Handling Advice: | Aliquot to avoid repeated freezing and thawing.                          |
| Storage:         | -20 °C   |
| Storage Comment: | Store at -20°C or lower. Aliquot to avoid repeated freezing and thawing. |

## Images



### Proximity Ligation Assay

**Image 1.** Proximity Ligation Analysis of protein-protein interactions between TP53 and CSNK1E. HeLa cells were stained with anti-TP53 rabbit purified polyclonal 1:1200 and anti-CSNK1E mouse monoclonal antibody 1:50. Each red dot represents the detection of protein-protein interaction complex, and nuclei were counterstained with DAPI (blue).



#### Immunofluorescence

**Image 2.** Immunofluorescence of monoclonal antibody to CSNK1E on HeLa cell. [antibody concentration 10 ug/ml]