



Datasheet for ABIN514713  
**anti-CSR1 antibody (AA 94-192)**



[Go to Product page](#)

3 Images

Overview

Quantity:	100 µg
Target:	CSR1
Binding Specificity:	AA 94-192
Reactivity:	Human
Host:	Mouse
Clonality:	Monoclonal
Conjugate:	This CSR1 antibody is un-conjugated
Application:	Western Blotting (WB), ELISA, Immunofluorescence (IF)

Product Details

Purpose:	Mouse monoclonal antibody raised against a partial recombinant CSR1.
Immunogen:	CSR1 (NP_004069, 94 a.a. ~ 192 a.a) partial recombinant protein with GST tag. MW of the GST tag alone is 26 KDa.
Sequence:	EAPGHRPTTN PNASKFAQKI GGSERCPRCS QAVYAAEKVI GAGKSWHKAC FRCACKGKGL ESTTLADKDG EIYCKGICYAK NFGPKGFGFG QGAGALVHS
Clone:	2A11
Isotype:	IgG2a
Cross-Reactivity:	Human
Characteristics:	Antibody Reactive Against Recombinant Protein.

## Target Details

Target:	CSRP1
Alternative Name:	CSRP1 ( <a href="#">CSRP1 Products</a> )
Background:	Full Gene Name: cysteine and glycine-rich protein 1 Synonyms: CRP,CRP1,CSRP,CYRP,D1S181E,DKFZp686M148
Gene ID:	1465
NCBI Accession:	<a href="#">NM_004078</a>

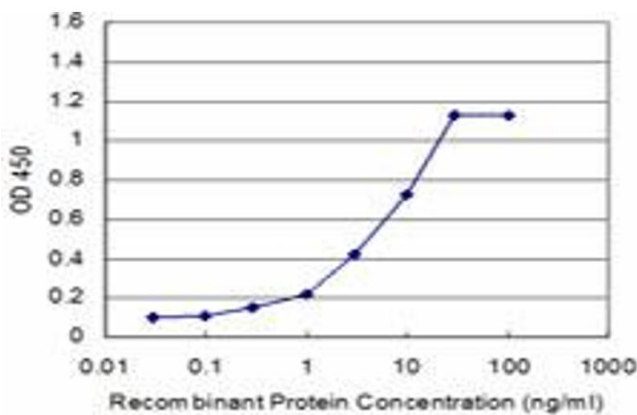
## Application Details

Application Notes:	Optimal working dilution should be determined by the investigator.
Restrictions:	For Research Use only

## Handling

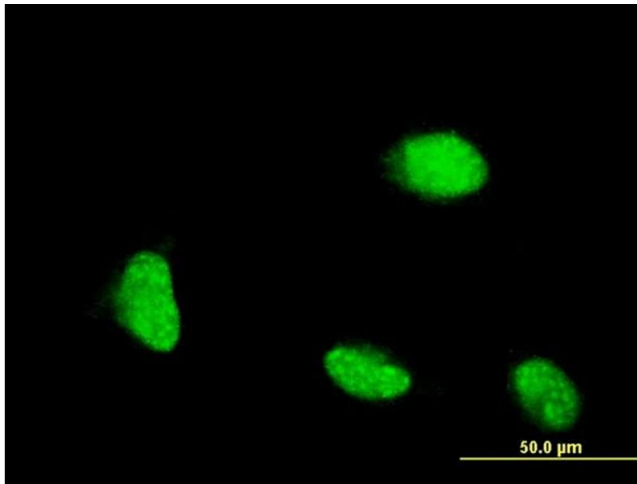
Buffer:	In 1x PBS, pH 7.4
Handling Advice:	Aliquot to avoid repeated freezing and thawing.
Storage:	-20 °C
Storage Comment:	Store at -20°C or lower. Aliquot to avoid repeated freezing and thawing.

## Images



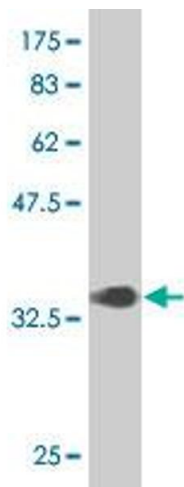
### ELISA

**Image 1.** Detection limit for recombinant GST tagged CSRP1 is approximately 0.3ng/ml as a capture antibody.



### Immunofluorescence

**Image 2.** Immunofluorescence of monoclonal antibody to CSRP1 on HeLa cell. [antibody concentration 10 ug/ml]



### Western Blotting

**Image 3.** Western Blot detection against Immunogen (36.63 kDa).