

Datasheet for ABIN514748
anti-CTH antibody (AA 1-405)



[Go to Product page](#)

2 Images

Overview

Quantity:	100 µL
Target:	CTH
Binding Specificity:	AA 1-405
Reactivity:	Human
Host:	Rabbit
Clonality:	Polyclonal
Conjugate:	This CTH antibody is un-conjugated
Application:	Western Blotting (WB), Immunoprecipitation (IP)

Product Details

Purpose:	Rabbit polyclonal antibody raised against a full-length human CTH protein.
Immunogen:	CTH (NP_001893.2, 1 a.a. ~ 405 a.a) full-length human protein.
Sequence:	<p>MQEKDASSQG FLPHFQHFAT QAIHVGQDPE QWTSRAVVPP ISLSTTFKQG APGQHSGFEY SRSGNPTRNC LEKAVAALDG AKYCLAFASG LAATVTITHL LKAGDQIICM DDVYGGTNRY FRQVASEFGL KISFVDCSKI KLLEAAITPE TKLVWIETPT NPTQKVIDIE GCAHIVHKHG DIILVDNNTF MSPYFQRPLA LGADISMYSY TKYMNGHSDV VMGLVSVNCE SLHNRLRFLQ NSLGAVPSPI DCYLCNRGLK TLHVRMEKHF KNGMAVAQFL ESNPWVEKVI YPGLPSHPQH ELVKRQCTGC TGMVTFYIKG TLQHAEIFLK NLKLFTLAES LGGFESLAEL PAIMTHASVL KNDRDVLGIS DTLIRLSVGL EDEEDLLEDL DQALKAHPP SGSHS</p>
Cross-Reactivity:	Human
Characteristics:	Antibody reactive against mammalian transfected lysate.

Target Details

Target:	CTH
Alternative Name:	CTH (CTH Products)
Background:	Full Gene Name: cystathionase (cystathionine gamma-lyase) Synonyms: MGC9471
Gene ID:	1491
NCBI Accession:	NM_001902
Pathways:	ER-Nucleus Signaling , Warburg Effect

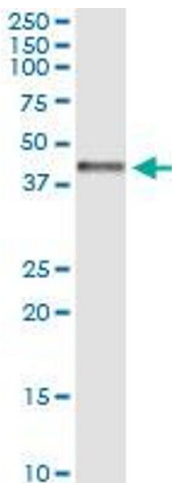
Application Details

Application Notes:	Optimal working dilution should be determined by the investigator.
Restrictions:	For Research Use only

Handling

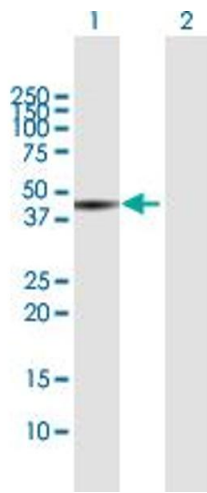
Format:	Liquid
Buffer:	No additive
Preservative:	Without preservative
Handling Advice:	Aliquot to avoid repeated freezing and thawing.
Storage:	-20 °C
Storage Comment:	Store at -20°C or lower. Aliquot to avoid repeated freezing and thawing.

Images



Immunoprecipitation

Image 1. Immunoprecipitation of CTH transfected lysate using anti-CTH MaxPab rabbit polyclonal antibody and Protein A Magnetic Bead , and immunoblotted with CTH purified MaxPab mouse polyclonal antibody (B01P) .



Western Blotting

Image 2. Western Blot analysis of CTH expression in transfected 293T cell line by CTH MaxPab polyclonal antibody.

Lane 1: CTH transfected lysate(44.5 KDa).

Lane 2: Non-transfected lysate.