

Datasheet for ABIN514753
anti-CTNNA1 antibody (AA 152-250)

3 Images

[Go to Product page](#)

Overview

Quantity:	100 µg
Target:	CTNNA1
Binding Specificity:	AA 152-250
Reactivity:	Human
Host:	Mouse
Clonality:	Monoclonal
Conjugate:	This CTNNA1 antibody is un-conjugated
Application:	Western Blotting (WB), ELISA, Proximity Ligation Assay (PLA)

Product Details

Purpose:	Mouse monoclonal antibody raised against a partial recombinant CTNNA1.
Immunogen:	CTNNA1 (NP_001894, 152 a.a. ~ 250 a.a) partial recombinant protein with GST tag. MW of the GST tag alone is 26 KDa.
Sequence:	VQLKVVEDGI LKL RNAGNEQ DLGIQYKALK PEVDKLNIMA AKRQQELKDV GHRDQMAAAR GILQKNVPIL YTASQACLQH PDVAAYKANR DLIYKQLQQ
Clone:	4G6
Isotype:	IgG1
Cross-Reactivity:	Human
Characteristics:	Antibody Reactive Against Recombinant Protein.

Target Details

Target:	CTNNA1
Alternative Name:	CTNNA1 (CTNNA1 Products)
Background:	Full Gene Name: catenin (cadherin-associated protein), alpha 1, 102 kDa Synonyms: CAP102,FLJ36832
Gene ID:	1495
NCBI Accession:	NM_001903
Pathways:	Regulation of Muscle Cell Differentiation , Cell-Cell Junction Organization , Maintenance of Protein Location

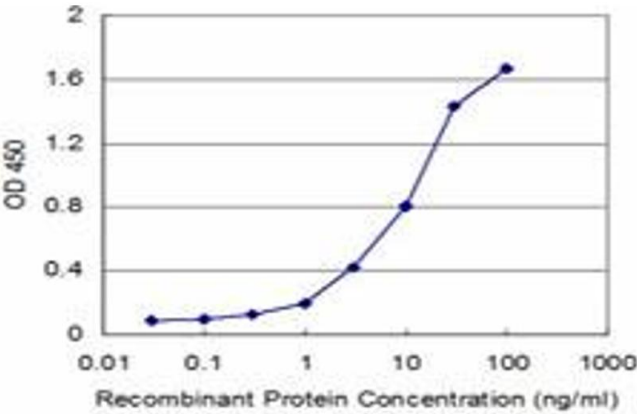
Application Details

Application Notes:	Optimal working dilution should be determined by the investigator.
Restrictions:	For Research Use only

Handling

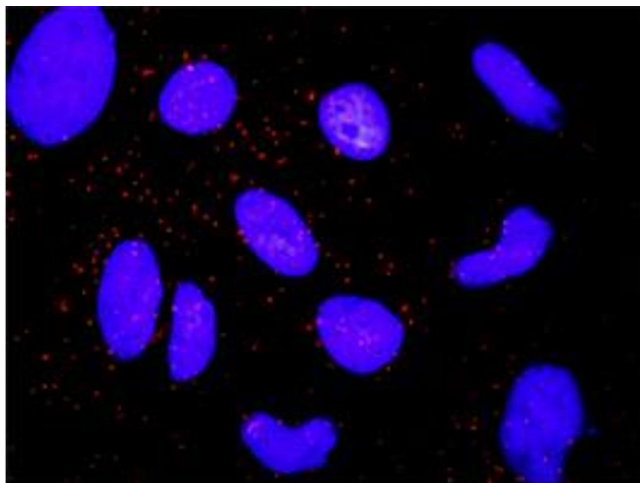
Buffer:	In 1x PBS, pH 7.4
Handling Advice:	Aliquot to avoid repeated freezing and thawing.
Storage:	-20 °C
Storage Comment:	Store at -20°C or lower. Aliquot to avoid repeated freezing and thawing.

Images



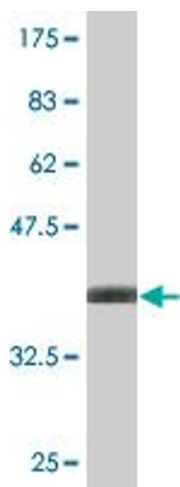
ELISA

Image 1. Detection limit for recombinant GST tagged CTNNA1 is approximately 0.3ng/ml as a capture antibody.



Proximity Ligation Assay

Image 2. Proximity Ligation Analysis of protein-protein interactions between ARRB2 and CTNNA1. HeLa cells were stained with anti-ARRB2 rabbit purified polyclonal 1:1200 and anti-CTNNA1 mouse monoclonal antibody 1:50. Each red dot represents the detection of protein-protein interaction complex, and nuclei were counterstained with DAPI (blue).



Western Blotting

Image 3. Western Blot detection against Immunogen (36.63 kDa) .