



[Go to Product page](#)

Datasheet for ABIN514777

anti-Cathepsin G antibody (AA 1-255)

2 Images

Overview

Quantity:	50 µg
Target:	Cathepsin G (CTSG)
Binding Specificity:	AA 1-255
Reactivity:	Human
Host:	Mouse
Clonality:	Polyclonal
Conjugate:	This Cathepsin G antibody is un-conjugated
Application:	Western Blotting (WB)

Product Details

Purpose:	Mouse polyclonal antibody raised against a full-length human CTSG protein.
Immunogen:	CTSG (NP_001902.1, 1 a.a. ~ 255 a.a) full-length human protein.
Sequence:	<p>MQPLLLLLAF LLPTGAEAGE IIGGRESRPH SRPYMAYLQI QSPAGQSRCG GFLVREDFVL TAAHCWGSNI NVTLGAHNIQ RRENTQQHIT ARRAIRHPQY NQRTIQNDIM LLQLSRRVRR NRNVNPVALP RAQEGLRPGT LCTVAGWGRV SMRRGDTLRLR EVQLRVQRDR QCLRIFGSYD PRRQICVGDR RERKAAFKGD SGGPLLCNNV AHGIVSYGKS SGVPPEVFTR VSSFLPWIRT TMRSFKLLDQ METPL</p>
Cross-Reactivity:	Human
Characteristics:	Antibody reactive against mammalian transfected lysate.

Target Details

Target:	Cathepsin G (CTSG)
Alternative Name:	CTSG (CTSG Products)
Background:	Full Gene Name: cathepsin G Synonyms: CG,MGC23078
Gene ID:	1511
NCBI Accession:	NM_001911
Pathways:	ACE Inhibitor Pathway , Peptide Hormone Metabolism , Regulation of Systemic Arterial Blood Pressure by Hormones

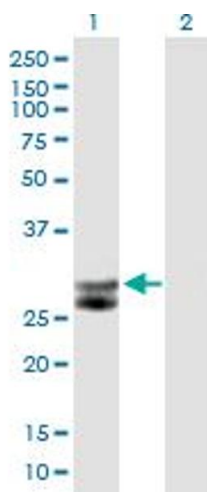
Application Details

Application Notes:	Optimal working dilution should be determined by the investigator.
Restrictions:	For Research Use only

Handling

Buffer:	In 1x PBS, pH 7.4
Handling Advice:	Aliquot to avoid repeated freezing and thawing.
Storage:	-20 °C
Storage Comment:	Store at -20°C or lower. Aliquot to avoid repeated freezing and thawing.

Images

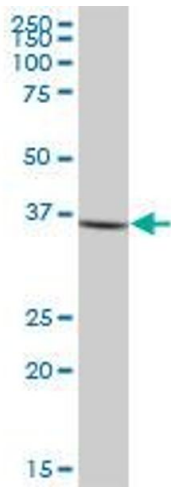


Western Blotting

Image 1. Western Blot analysis of CTSG expression in transfected 293T cell line by CTSG MaxPab polyclonal antibody.

Lane 1: CTSG transfected lysate(28.05 KDa).

Lane 2: Non-transfected lysate.



Western Blotting

Image 2. CTSG MaxPab polyclonal antibody. Western Blot analysis of CTSG expression in human kidney.