



[Go to Product page](#)

Datasheet for ABIN514798  
**anti-CUX1 antibody (AA 1-676)**

2 Images

Overview

Quantity:	50 µg
Target:	CUX1
Binding Specificity:	AA 1-676
Reactivity:	Human
Host:	Mouse
Clonality:	Polyclonal
Conjugate:	This CUX1 antibody is un-conjugated
Application:	Western Blotting (WB), Immunofluorescence (IF)

Product Details

Purpose:	Mouse polyclonal antibody raised against a full-length human CUX1 protein.
Immunogen:	CUX1 (AAH25422.1, 1 a.a. ~ 676 a.a) full-length human protein.
Sequence:	MAANVGSMFQ YWKRFDLQQL QRELDATATV LANRQDESEQ SRKRLIEQSR EFKKNTPEDL RKQVAPLLKS FQGEIDALSK RSKEAEEAFL NVYKRLIDVP DPVPALDLGQ QLQLKVQRLH DIETENQKLR ETLEEYNKEF AEVKNQEVTI KALKEKIREY EQTLKNQAET IALEKEQKLQ NDFAEKERKL QETQMSTTSK LEEAEHKVQS LQTALEKTRT ELFDLTKTYD EETTAKADEI EMIMTDLERA NQRAEVAQRE AETLREQLSS ANHSLQLASQ IQKAPDVAIE VLTRSSLEVE LAAKEREIAQ LVEDVQRLQA SLTKLRENSA SQISQLEQQL SAKNSTLKQL EEKLGQADY EEVKKELNIL KSMEFAPSEG AGTQDAKPL EVLLLEKNRS LQSESAALRI SNSDLSGRCA ELQVRITEAV ATATEQRELI ARLEQDLSII QSIQRPDAEG AAEHRLEKIP EPIKEATALF YGPAAPASGA LPEGQVDSLL SISSQRERF RARNQELEAE NRLAQHTLQA LQSELDLRA DNVKLFEDIK FLQSYPRGRS GSDDTELRY S QYEERLDPF SSFSKRERQR KYLSLSPWDK

## Product Details

---

ATLSMGRLLV SNKMARTIGF FYTLFLHCLV FLVLYKLAWS ESMEKDCATF CAKKFADHLH  
KFHENDNGAA AGDLWQ

Cross-Reactivity: Human

Characteristics: Antibody reactive against mammalian transfected lysate.

## Target Details

---

Target: CUX1

Alternative Name: CUX1 ([CUX1 Products](#))

Background: Full Gene Name: cut-like homeobox 1

Synonyms:

CASP,CDP,CDP/Cut,CDP1,COY1,CUTL1,CUX,Clox,Cux/CDP,GOLIM6,Nbla10317,p100,p110,p200,p75

Gene ID: 1523

Pathways: [Cellular Glucan Metabolic Process](#)

## Application Details

---

Application Notes: Optimal working dilution should be determined by the investigator.

Restrictions: For Research Use only

## Handling

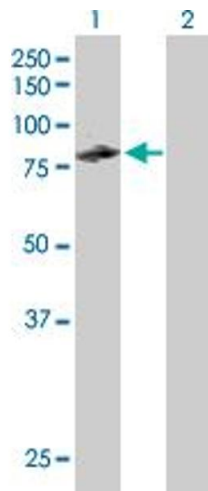
---

Buffer: In 1x PBS, pH 7.4

Handling Advice: Aliquot to avoid repeated freezing and thawing.

Storage: -20 °C

Storage Comment: Store at -20°C or lower. Aliquot to avoid repeated freezing and thawing.

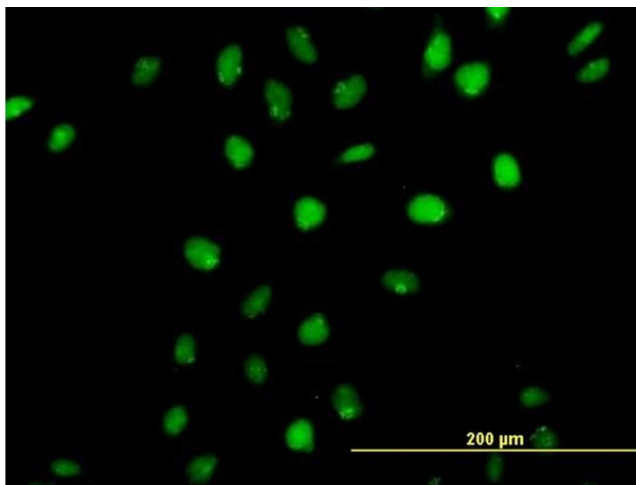


### Western Blotting

**Image 1.** Western Blot analysis of CUX1 expression in transfected 293T cell line by CUX1 MaxPab polyclonal antibody.

Lane 1: CUTL1 transfected lysate(74.36 KDa).

Lane 2: Non-transfected lysate.



### Immunofluorescence

**Image 2.** Immunofluorescence of purified MaxPab antibody to CUTL1 on HeLa cell. [antibody concentration 10 ug/ml]