



Datasheet for ABIN514800  
**anti-CX3CR1 antibody (AA 1-355)**



[Go to Product page](#)

1 Image

Overview

Quantity:	50 µg
Target:	CX3CR1
Binding Specificity:	AA 1-355
Reactivity:	Human
Host:	Mouse
Clonality:	Polyclonal
Conjugate:	This CX3CR1 antibody is un-conjugated
Application:	Immunofluorescence (IF)

Product Details

Purpose:	Mouse polyclonal antibody raised against a full-length human CX3CR1 protein.
Immunogen:	CX3CR1 (NP_001328.1, 1 a.a. ~ 355 a.a) full-length human protein.
Sequence:	MDQFPESVTE NFEYDDLAEA CYIGDIVVFG TVFLSIFYSV IFAIGLVGNL LVVFALTNSK KPKSVTDIYL LNLALSDLLF VATLPFWTHY LINEKGLHNA MCKFTTAAFF IGFFGSIFFI TVISIDRYLA IVLAANSMNN RTVQHGVVIS LGVWAAAILV AAPQFMFTKQ KENECLGDYP EVLQEIWPVL RNVETNFLGF LLPLLIMSYC YFRIIQLFS CKNHKKAKAI KLILLVVIVF FLFWTPYNVM IFLETLKLYD FFPSCDMRKD LRLALSVTET VAFSHCCLNP LIYAFAGEKF RRYLYHLYGK CLAVLCGRSV HVDFSSSESQ RSRHGVLSS NFTYHTSDGD ALLLL
Cross-Reactivity:	Human
Characteristics:	Antibody reactive against mammalian transfected lysate.

## Target Details

Target:	CX3CR1
Alternative Name:	CX3CR1 ( <a href="#">CX3CR1 Products</a> )
Background:	Full Gene Name: chemokine (C-X3-C motif) receptor 1 Synonyms: CCRL1,CMKBRL1,CMKDR1,GPR13,GPRV28,V28
Gene ID:	1524
NCBI Accession:	<a href="#">NM_001337</a>
Pathways:	<a href="#">Cellular Response to Molecule of Bacterial Origin</a>

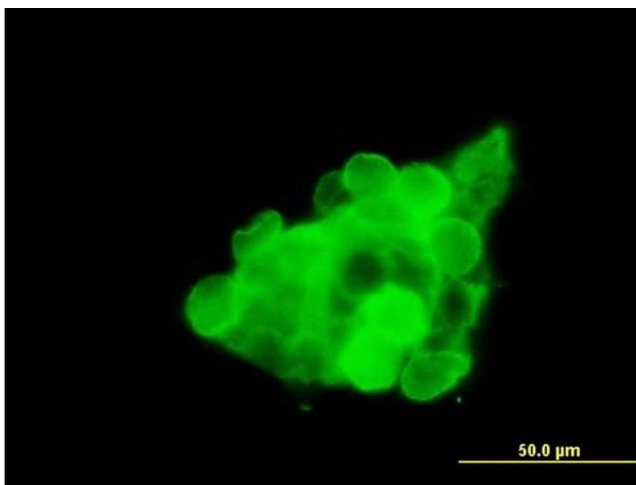
## Application Details

Application Notes:	Optimal working dilution should be determined by the investigator.
Restrictions:	For Research Use only

## Handling

Buffer:	In 1x PBS, pH 7.4
Handling Advice:	Aliquot to avoid repeated freezing and thawing.
Storage:	-20 °C
Storage Comment:	Store at -20°C or lower. Aliquot to avoid repeated freezing and thawing.

## Images



### Immunofluorescence

**Image 1.** Immunofluorescence of purified MaxPab antibody to CX3CR1 on 293T cell. [antibody concentration 1 ug/ml]