



[Go to Product page](#)

Datasheet for ABIN514804  
**anti-TEX28 antibody (AA 1-410)**

3 Images

Overview

Quantity:	100 µg
Target:	TEX28
Binding Specificity:	AA 1-410
Reactivity:	Human
Host:	Mouse
Clonality:	Monoclonal
Conjugate:	This TEX28 antibody is un-conjugated
Application:	Western Blotting (WB), ELISA

Product Details

Purpose:	Mouse monoclonal antibody raised against a full-length recombinant TEX28.
Immunogen:	TEX28 (AAH26183, 1 a.a. ~ 410 a.a) full-length recombinant protein with GST tag. MW of the GST tag alone is 26 KDa.
Sequence:	MVLKAEHTRS PSATLPSNVP SCRSLSSSED GPSGPSSLAD GGLAHNLQDS VRHRILYLSE QLRVEKASRD GNTVSYLKLK SKADRHQVPH IQQAFEKVNQ RASATIAQIE HRLHQCHQQL QELEEGCRPE GLLLMAESDP ANCEPPSEKA LLSEPPEPGG EDGPVNLPHPA SRPFILESRF QSLQGGTCLE TEDVAQQQNL LLQKVKAELE EAKRFHISLQ ESYHSLKERS LTDLQLLLES LQEEKCRQAL MEEQVNGRLQ GQLNEIYNLK HNLACSEERM AYLSYERAKE IWEITETFKS RISKLEMLQQ VTQLEAAEHL QSRPPQMLFK FLSPRLSLAT VLLVSVSTLC ACPSSLISSR LCTCTMLMLI GLGVLAQQRW RAIPATDWQE WVPSRCRLYS KDSGPPADGP
Clone:	1A8

## Product Details

---

Isotype:	IgG2a
Cross-Reactivity:	Human
Characteristics:	Antibody Reactive Against Recombinant Protein.

## Target Details

---

Target:	TEX28
Alternative Name:	TEX28 ( <a href="#">TEX28 Products</a> )
Background:	Full Gene Name: testis expressed 28 Synonyms: CXorf2,fTEX
Gene ID:	1527

## Application Details

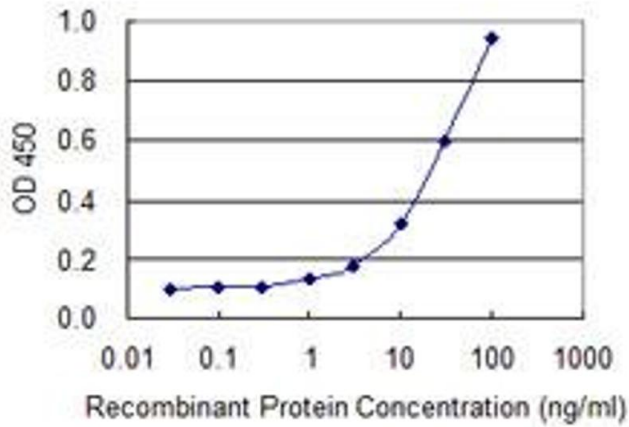
---

Application Notes:	Optimal working dilution should be determined by the investigator.
Restrictions:	For Research Use only

## Handling

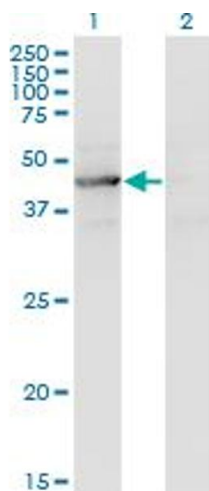
---

Buffer:	In 1x PBS, pH 7.4
Handling Advice:	Aliquot to avoid repeated freezing and thawing.
Storage:	-20 °C
Storage Comment:	Store at -20°C or lower. Aliquot to avoid repeated freezing and thawing.



### ELISA

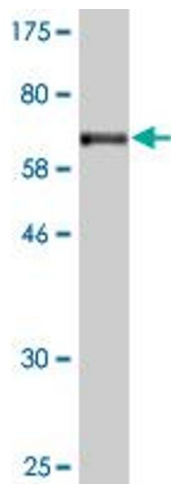
**Image 1.** Detection limit for recombinant GST tagged TEX28 is 0.3 ng/ml as a capture antibody.



### Western Blotting

**Image 2.** Western Blot analysis of TEX28 expression in transfected 293T cell line by TEX28 monoclonal antibody (M05), clone 1A8.

Lane 1: TEX28 transfected lysate (Predicted MW: 46.1 kDa).  
Lane 2: Non-transfected lysate.



### Western Blotting

**Image 3.** Western Blot detection against Immunogen (70.84 kDa).