



[Go to Product page](#)

Datasheet for ABIN514810
anti-CYLC1 antibody (AA 526-625)

2 Images

Overview

Quantity:	100 µg
Target:	CYLC1
Binding Specificity:	AA 526-625
Reactivity:	Human
Host:	Mouse
Clonality:	Monoclonal
Conjugate:	This CYLC1 antibody is un-conjugated
Application:	Western Blotting (WB), ELISA

Product Details

Purpose:	Mouse monoclonal antibody raised against a partial recombinant CYLC1.
Immunogen:	CYLC1 (XP_088636.6, 526 a.a. ~ 625 a.a) partial recombinant protein with GST tag. MW of the GST tag alone is 26 KDa.
Sequence:	SSKTGFKTST KIKGSDTESE ESLYKPGAKK KIDESDGTSA NSKMEGLESK RGFRMSSKKT TFNEKGEKAS TGRVPPSREK PPLPACEPSL PSPKVRRLCW
Clone:	6F12
Isotype:	IgG2a
Cross-Reactivity:	Human
Characteristics:	Antibody Reactive Against Recombinant Protein.

Target Details

Target:	CYLC1
Alternative Name:	CYLC1 (CYLC1 Products)
Background:	Full Gene Name: cyclin, basic protein of sperm head cytoskeleton 1 Synonyms: CYCL1
Gene ID:	1538
NCBI Accession:	XM_088636

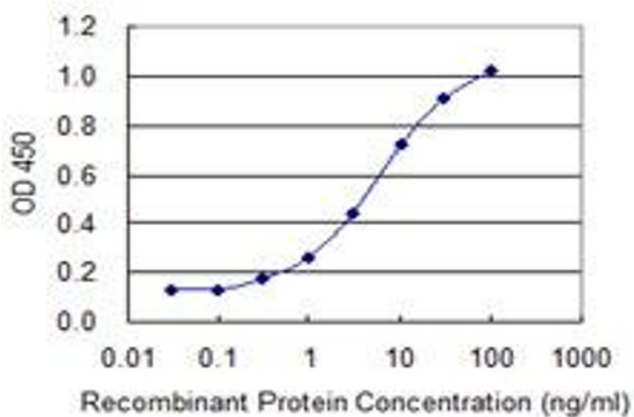
Application Details

Application Notes:	Optimal working dilution should be determined by the investigator.
Restrictions:	For Research Use only

Handling

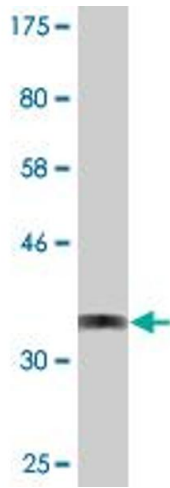
Buffer:	In 1x PBS, pH 7.4
Handling Advice:	Aliquot to avoid repeated freezing and thawing.
Storage:	-20 °C
Storage Comment:	Store at -20°C or lower. Aliquot to avoid repeated freezing and thawing.

Images



ELISA

Image 1. Detection limit for recombinant GST tagged CYLC1 is 0.1 ng/ml as a capture antibody.



Western Blotting

Image 2. Western Blot detection against Immunogen (36.74 kDa).