

Datasheet for ABIN514820
anti-CYP1A2 antibody (AA 1-516)



[Go to Product page](#)

1 Image

Overview

Quantity:	100 µg
Target:	CYP1A2
Binding Specificity:	AA 1-516
Reactivity:	Human
Host:	Rabbit
Clonality:	Polyclonal
Conjugate:	This CYP1A2 antibody is un-conjugated
Application:	Western Blotting (WB)

Product Details

Purpose:	Rabbit polyclonal antibody raised against a full-length human CYP1A2 protein.
Immunogen:	CYP1A2 (AAH67427.1, 1 a.a. ~ 516 a.a) full-length human protein.
Sequence:	MALSQSVFSA ATELLASAI FCLVFWLKG LRPRVPKGLK SPPEPWGWPL LGHVLTGKN PHLALSRMSQ RYGDVLQIRI DSTPVLVLSR LDTIRQALVR QGDDFKGRPD LYTSTLITDG QSLTFSTDSG PVWAARRRLA QNALNTFSIA SDPASSSSCY LEEHVSKEAK ALISRLQELM AGPGHFDPYN QVVSVANVI GAMCFGQHFP ESSDEMMLSLV KNTHEFVETA SSGNPLDFFP ILRYLPNPAL QRFKAFNQRF LWFLQKTVQE HYQDFDKNSV RDITGALFKH SKKGPRASGN LIPQEKIVNL VNDIFGAGFD TVTTAISWSL MYLVTKPEIQ RKIQKELDTV IGRERRPRLS DRPQLPYLEA FILETFRHSS FLPFTIPHST TRDTTLNGFY IPKKCCVFVN QWQVNHDP WEDPSEFRPE RFLTADGTAI NKPLSEKMMML FGMGKRRRCIG EVLAKWEIFL FLAILLQLE FSVPPGVKVD LTPIYGLTMK HARCEHVQAR LRFSIN

Product Details

Cross-Reactivity:	Human
Characteristics:	Antibody reactive against mammalian transfected lysate.

Target Details

Target:	CYP1A2
Alternative Name:	CYP1A2 (CYP1A2 Products)
Background:	Full Gene Name: cytochrome P450, family 1, subfamily A, polypeptide 2 Synonyms: CP12,P3-450,P450(PA)
Gene ID:	1544

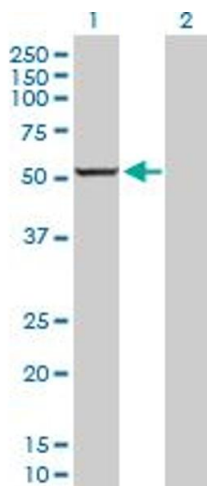
Application Details

Application Notes:	Optimal working dilution should be determined by the investigator.
Restrictions:	For Research Use only

Handling

Buffer:	In 1x PBS, pH 7.4
Handling Advice:	Aliquot to avoid repeated freezing and thawing.
Storage:	-20 °C
Storage Comment:	Store at -20°C or lower. Aliquot to avoid repeated freezing and thawing.

Images



Western Blotting

Image 1. Western Blot analysis of CYP1A2 expression in transfected 293T cell line by CYP1A2 MaxPab polyclonal antibody.

Lane 1: CYP1A2 transfected lysate(58.50 KDa).

Lane 2: Non-transfected lysate.