



Datasheet for ABIN514833  
**anti-CYP2C18 antibody (AA 1-490)**



[Go to Product page](#)

1 Image

Overview

Quantity:	50 µg
Target:	CYP2C18
Binding Specificity:	AA 1-490
Reactivity:	Human
Host:	Mouse
Clonality:	Polyclonal
Conjugate:	This CYP2C18 antibody is un-conjugated
Application:	Western Blotting (WB)

Product Details

Purpose:	Mouse polyclonal antibody raised against a full-length human CYP2C18 protein.
Immunogen:	CYP2C18 (NP_000763.1, 1 a.a. ~ 490 a.a) full-length human protein.
Sequence:	MDPAVALVLC LSCLFLLSLW RQSSGRGRLP SGPTPLPIIG NILQLDVKDM SKSLTNFSKV YGPVFTVYFG LKPIVVLHGY EAVKEALIDH GEEFSGRGSF PVAEKVNKGL GILFSNGKRW KEIRRFCLMT LRNFGMGKRS IEDRVQEEAR CLVEELRKTN ASPCDPTFIL GCAPCNVICS VIFHDRFDYK DQRFLNLMEK FNENLRILSS PWIQVCNNFP ALIDYLPESH NKIAENFAYI KSYVLERIKE HQESLDMNSA RDFIDCFLIK MEQEKHNQQS EFTVESLIAT VTDMFGAGTE TTSTTLRYGL LLLLKYPEVT AKVQEEIECV VGRNRSPCMQ DRSHMPYTDA VVHEIQRYID LLPTNLPHAV TCDVKFKNYL IPKGTITIIS LTSVLHNDKE FPNPEMFDPG HFLDKSGNFK KSDYFMPFSA GKRMCMGEGL ARMELFLFLT TILQNFNLKS QVDPKDIDIT PIANAFGRVP PLYQLCFIPV

## Product Details

---

Cross-Reactivity:	Human
Characteristics:	Antibody reactive against mammalian transfected lysate.

## Target Details

---

Target:	CYP2C18
Alternative Name:	CYP2C18 ( <a href="#">CYP2C18 Products</a> )
Background:	Full Gene Name: cytochrome P450, family 2, subfamily C, polypeptide 18 Synonyms: CPCI,CYP2C,CYP2C17,DKFZp686I24235,P450-6B/29C,P450IIC17
Gene ID:	1562
NCBI Accession:	<a href="#">NM_000772</a>

## Application Details

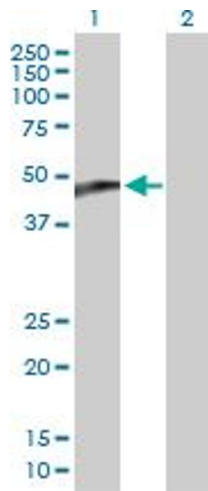
---

Application Notes:	Optimal working dilution should be determined by the investigator.
Restrictions:	For Research Use only

## Handling

---

Buffer:	In 1x PBS, pH 7.4
Handling Advice:	Aliquot to avoid repeated freezing and thawing.
Storage:	-20 °C
Storage Comment:	Store at -20°C or lower. Aliquot to avoid repeated freezing and thawing.



### Western Blotting

**Image 1.** Western Blot analysis of CYP2C18 expression in transfected 293T cell line by CYP2C18 MaxPab polyclonal antibody.

Lane1:CYP2C18 transfected lysate(53.9 KDa).

Lane2:Non-transfected lysate.