



[Go to Product page](#)

Datasheet for ABIN514882
anti-DBC1 antibody (AA 1-320)

2 Images

Overview

Quantity:	50 µg
Target:	DBC1 (BRINP1)
Binding Specificity:	AA 1-320
Reactivity:	Human
Host:	Mouse
Clonality:	Polyclonal
Conjugate:	This DBC1 antibody is un-conjugated
Application:	Western Blotting (WB), Immunofluorescence (IF)

Product Details

Purpose:	Mouse polyclonal antibody raised against a full-length human DBC1 protein.
Immunogen:	DBC1 (AAH21560.1, 1 a.a. ~ 320 a.a) full-length human protein.
Sequence:	MNWRFVELLY FLFIWGRISV QPSHQEPAGT DQHVSKEFDW LISDRGPFHH SRSYLSFVER HRQGFTRYK IYREFARWKV RNTAIERRDL VRHPVPLMPE FQRSIRLLGR RPTTQQFIDT IIKKYGTHLL ISATLGEEA LTMYMDSKRL DRKSGNATQS VEALHQLASS YFVDRDGTMR RLHEIQISTG AIKVTETRTG PLGCNSYDNL DSVSSVLLQS TESKLHLQGL QIIFPQYLQE KFVQSALSYI MCNGEGEYLC QNSQCRCQCA EEFQCNCPI TDIQIMEYTL ANMAKSWAEA YKDLENSGRE SHSVPLHEWP
Cross-Reactivity:	Human
Characteristics:	Antibody reactive against mammalian transfected lysate.

Target Details

Target:	DBC1 (BRINP1)
Alternative Name:	DBC1 (BRINP1 Products)
Background:	Full Gene Name: deleted in bladder cancer 1 Synonyms: DBCCR1,FAM5A
Gene ID:	1620

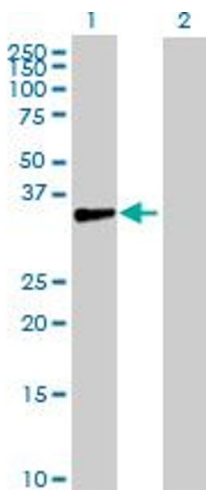
Application Details

Application Notes:	Optimal working dilution should be determined by the investigator.
Restrictions:	For Research Use only

Handling

Buffer:	In 1x PBS, pH 7.4
Handling Advice:	Aliquot to avoid repeated freezing and thawing.
Storage:	-20 °C
Storage Comment:	Store at -20°C or lower. Aliquot to avoid repeated freezing and thawing.

Images

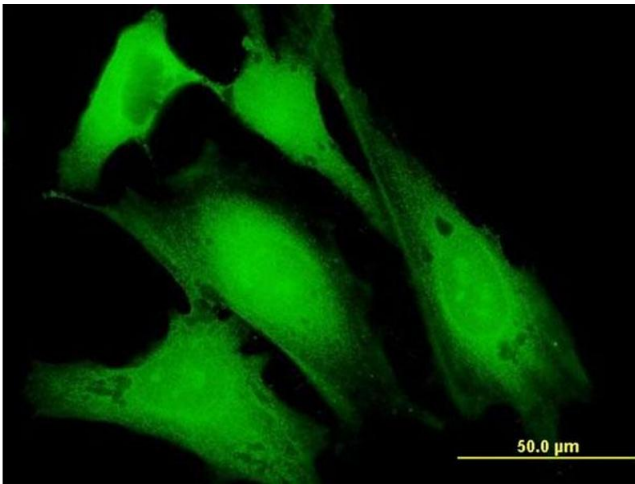


Western Blotting

Image 1. Western Blot analysis of DBC1 expression in transfected 293T cell line by DBC1 MaxPab polyclonal antibody.

Lane 1: DBC1 transfected lysate(35.2 KDa).

Lane 2: Non-transfected lysate.



Immunofluorescence

Image 2. Immunofluorescence of purified MaxPab antibody to DBC1 on HeLa cell. [antibody concentration 10 ug/ml]