



[Go to Product page](#)

Datasheet for ABIN514883  
**anti-DBC1 antibody (AA 1-320)**

2 Images

Overview

|                      |   |
|----------------------|---|
| Quantity:            | 100 µL  |
| Target:              | DBC1 (BRINP1)                                   |
| Binding Specificity: | AA 1-320  |
| Reactivity:          | Human   |
| Host:                | Rabbit  |
| Clonality:           | Polyclonal                                      |
| Conjugate:           | This DBC1 antibody is un-conjugated             |
| Application:         | Western Blotting (WB), Immunoprecipitation (IP) |

Product Details

|                   |  |
|-------------------|--|
| Purpose:          | Rabbit polyclonal antibody raised against a full-length human DBC1 protein.  |
| Immunogen:        | DBC1 (AAH21560.1, 1 a.a. ~ 320 a.a) full-length human protein.   |
| Sequence:         | MNWRFVELLY FLFIWGRISV QPSHQEPAGT DQHVSKEFDW LISDRGPFHH SRSYLSFVER<br>HRQGFTRYK IYREFARWKV RNTAIERRDL VRHPVPLMPE FQRSIRLLGR RPTTQQFIDT<br>IIKKYGTHLL ISATLGEEA LTMYMDSRL DRKSGNATQS VEALHQLASS YFVDRDGTMR<br>RLHEIQISTG AIKVTETRTG PLGCNSYDNL DSVSSVLLQS TESKLHLQGL QIIFPQYLQE<br>KFVQSALSYI MCNGEGEYLC QNSQCRCQCA EEFQCNCPI TDIQIMEYTL ANMAKSWAEA<br>YKDLENSGRE SHSVPLHEWP |
| Cross-Reactivity: | Human  |
| Characteristics:  | Antibody reactive against mammalian transfected lysate.  |

## Target Details

|                   |   |
|-------------------|---|
| Target:           | DBC1 (BRINP1)   |
| Alternative Name: | DBC1 ( <a href="#">BRINP1 Products</a> )                              |
| Background:       | Full Gene Name: deleted in bladder cancer 1<br>Synonyms: DBCCR1,FAM5A |
| Gene ID:          | 1620  |

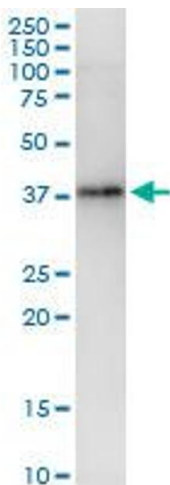
## Application Details

|                    |  |
|--------------------|--|
| Application Notes: | Optimal working dilution should be determined by the investigator. |
| Restrictions:      | For Research Use only  |

## Handling

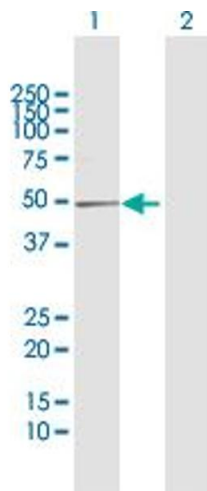
|                  |  |
|------------------|--|
| Format:          | Liquid   |
| Buffer:          | No additive  |
| Preservative:    | Without preservative   |
| Handling Advice: | Aliquot to avoid repeated freezing and thawing.                          |
| Storage:         | -20 °C   |
| Storage Comment: | Store at -20°C or lower. Aliquot to avoid repeated freezing and thawing. |

## Images



### Immunoprecipitation

**Image 1.** Immunoprecipitation of DBC1 transfected lysate using anti-DBC1 MaxPab rabbit polyclonal antibody and Protein A Magnetic Bead , and immunoblotted with DBC1 purified MaxPab mouse polyclonal antibody (B01P) .



### Western Blotting

**Image 2.** Western Blot analysis of DBC1 expression in transfected 293T cell line by DBC1 MaxPab polyclonal antibody.

Lane 1: DBC1 transfected lysate(37.2 KDa).

Lane 2: Non-transfected lysate.