



[Go to Product page](#)

Datasheet for ABIN514893
anti-DCK antibody (AA 1-260)

4 Images

Overview

Quantity:	100 µL
Target:	DCK
Binding Specificity:	AA 1-260
Reactivity:	Human
Host:	Rabbit
Clonality:	Polyclonal
Conjugate:	This DCK antibody is un-conjugated
Application:	Western Blotting (WB), Immunoprecipitation (IP)

Product Details

Purpose:	Rabbit polyclonal antibody raised against a full-length human DCK protein.
Immunogen:	DCK (NP_000779.1, 1 a.a. ~ 260 a.a) full-length human protein.
Sequence:	MATPPKRSCP SFSASSEGTR IKKISIEGNI AAGKSTFVNI LKQLCEDWEV VPEPVARWCN VQSTQDEFEE LTMSQKNGGN VLQMMYEKPE RWSFTFQTYA CLSRIRAQLA SLNGKLDKDAE KPVLFERSV YSDRYIFASN LYESECMNET EWTIYQDWHW WMNNQFGQSL ELDGIYLQA TPETCLHRIY LRGRNEEQGI PLEYLEKLHY KHESWLLHRT LKTNFDYLQE VPILTLDVNE DFKDKYESLV EKVKEFLSTL
Cross-Reactivity:	Human
Characteristics:	Antibody reactive against mammalian transfected lysate.

Target Details

Target:	DCK
Alternative Name:	DCK (DCK Products)
Background:	Full Gene Name: deoxycytidine kinase Synonyms: MGC117410,MGC138632
Gene ID:	1633
NCBI Accession:	NM_000788

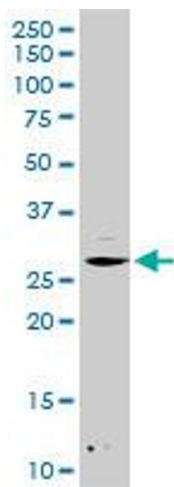
Application Details

Application Notes:	Optimal working dilution should be determined by the investigator.
Restrictions:	For Research Use only

Handling

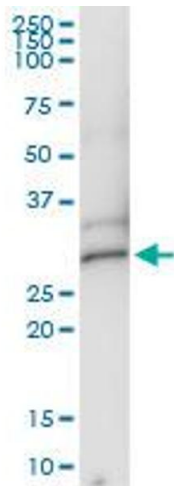
Format:	Liquid
Buffer:	No additive
Preservative:	Without preservative
Handling Advice:	Aliquot to avoid repeated freezing and thawing.
Storage:	-20 °C
Storage Comment:	Store at -20°C or lower. Aliquot to avoid repeated freezing and thawing.

Images



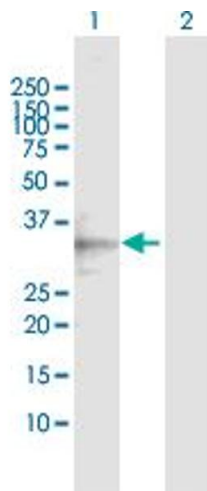
Western Blotting

Image 1. DCK MaxPab rabbit polyclonal antibody. Western Blot analysis of DCK expression in HepG2.



Immunoprecipitation

Image 2. Immunoprecipitation of DCK transfected lysate using anti-DCK MaxPab rabbit polyclonal antibody and Protein A Magnetic Bead , and immunoblotted with DCK purified MaxPab mouse polyclonal antibody (B01P) .



Western Blotting

Image 3. Western Blot analysis of DCK expression in transfected 293T cell line by DCK MaxPab polyclonal antibody.

Lane 1: DCK transfected lysate(28.60 KDa).

Lane 2: Non-transfected lysate.

Please check the [product details page](#) for more images. Overall 4 images are available for ABIN514893.