

Datasheet for ABIN514909

## anti-Angiotensin I Converting Enzyme 1 antibody (AA 592-701)



[Go to Product page](#)

### 3 Images

#### Overview

Quantity:	100 µg
Target:	Angiotensin I Converting Enzyme 1 (ACE)
Binding Specificity:	AA 592-701
Reactivity:	Human
Host:	Mouse
Clonality:	Monoclonal
Conjugate:	This Angiotensin I Converting Enzyme 1 antibody is un-conjugated
Application:	Western Blotting (WB), ELISA, Immunofluorescence (IF)

#### Product Details

Purpose:	Mouse monoclonal antibody raised against a partial recombinant ACE.
Immunogen:	ACE (AAH36375, 592 a.a. ~ 701 a.a) partial recombinant protein with GST tag. MW of the GST tag alone is 26 KDa.
Sequence:	RLATAMKLGFSRPWPEAMQLITGQPNMSASAMLSYFKPLL D WLRTENELHGEKLGWPQYN WTPNSDDFYNETETKIFLQFYDQTGIWDHGA PHLLPPSQA RGTREAPVYM
Clone:	4B10
Isotype:	IgG1
Cross-Reactivity:	Human
Characteristics:	Antibody Reactive Against Recombinant Protein.

## Target Details

Target:	Angiotensin I Converting Enzyme 1 (ACE)
Alternative Name:	ACE ( <a href="#">ACE Products</a> )
Background:	Full Gene Name: angiotensin I converting enzyme (peptidyl-dipeptidase A) 1 Synonyms: ACE1,CD143,DCP,DCP1,MGC26566
Gene ID:	1636
Pathways:	<a href="#">ACE Inhibitor Pathway</a> , <a href="#">Peptide Hormone Metabolism</a> , <a href="#">Regulation of Systemic Arterial Blood Pressure by Hormones</a> , <a href="#">Feeding Behaviour</a> , <a href="#">Smooth Muscle Cell Migration</a>

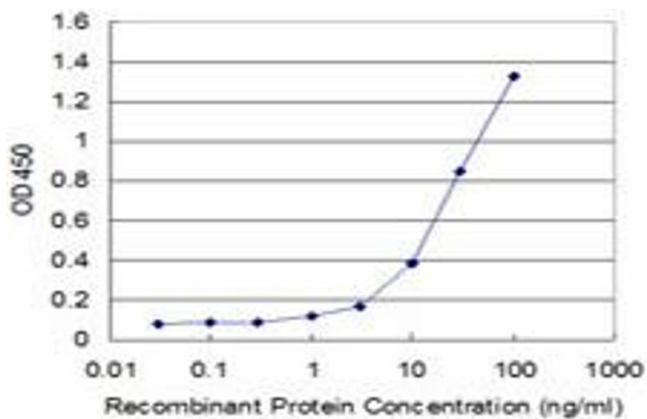
## Application Details

Application Notes:	Optimal working dilution should be determined by the investigator.
Restrictions:	For Research Use only

## Handling

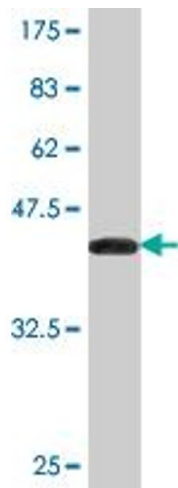
Buffer:	In 1x PBS, pH 7.4
Handling Advice:	Aliquot to avoid repeated freezing and thawing.
Storage:	-20 °C
Storage Comment:	Store at -20°C or lower. Aliquot to avoid repeated freezing and thawing.

## Images



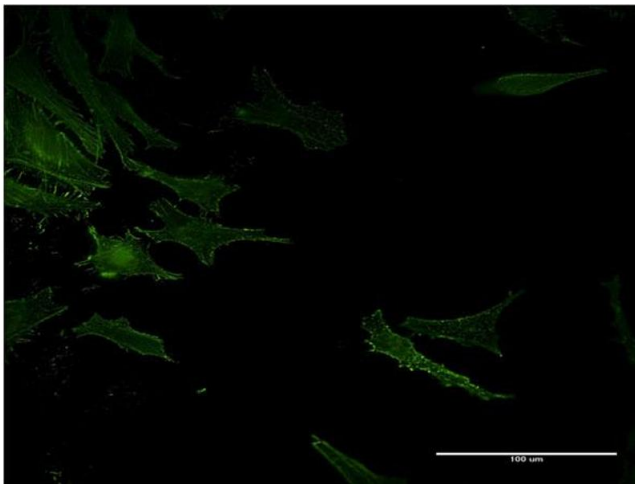
### ELISA

**Image 1.** Detection limit for recombinant GST tagged ACE is approximately 1ng/ml as a capture antibody.



### Western Blotting

**Image 2.** Western Blot detection against Immunogen (37.73 KDa).



### Immunofluorescence

**Image 3.** Immunofluorescence of monoclonal antibody to ACE on HeLa cell. [antibody concentration 10 ug/ml]