



[Go to Product page](#)

Datasheet for ABIN514947
anti-DECR1 antibody (AA 236-335)

4 Images

Overview

Quantity:	100 µg
Target:	DECR1
Binding Specificity:	AA 236-335
Reactivity:	Human
Host:	Mouse
Clonality:	Monoclonal
Conjugate:	This DECR1 antibody is un-conjugated
Application:	Western Blotting (WB), ELISA, Immunohistochemistry (Paraffin-embedded Sections) (IHC (p))

Product Details

Purpose:	Mouse monoclonal antibody raised against a partial recombinant DECR1.
Immunogen:	DECR1 (NP_001350, 236 a.a. ~ 335 a.a) partial recombinant protein with GST tag. MW of the GST tag alone is 26 KDa.
Sequence:	NVIQPGPIKT KGAFSRLDPT GTFEKEMIGR IPCGRLGTVE ELANLAAFLC SDYASWINGA VIKFDGGEEV LISGEFNDLR KVTKEQWDTI EELIRKTKGS
Clone:	3D4
Isotype:	IgG2a
Cross-Reactivity:	Human
Characteristics:	Antibody Reactive Against Recombinant Protein.

Target Details

Target:	DECR1
Alternative Name:	DECR1 (DECR1 Products)
Background:	Full Gene Name: 2,4-dienoyl CoA reductase 1, mitochondrial Synonyms: DECR,NADPH,SDR18C1
Gene ID:	1666
NCBI Accession:	NM_001359
Pathways:	Monocarboxylic Acid Catabolic Process

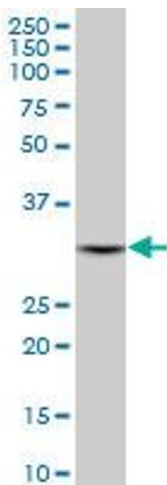
Application Details

Application Notes:	Optimal working dilution should be determined by the investigator.
Restrictions:	For Research Use only

Handling

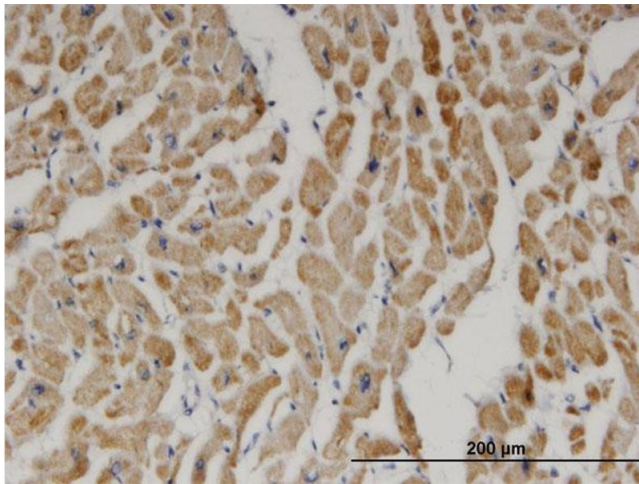
Buffer:	In 1x PBS, pH 7.4
Handling Advice:	Aliquot to avoid repeated freezing and thawing.
Storage:	-20 °C
Storage Comment:	Store at -20°C or lower. Aliquot to avoid repeated freezing and thawing.

Images



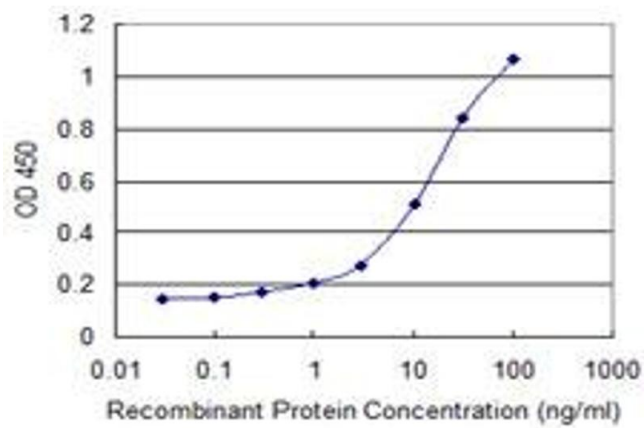
Western Blotting

Image 1. DECR1 monoclonal antibody (M01), clone 3D4.
Western Blot analysis of DECR1 expression in HepG2 .



Immunostaining

Image 2. Immunoperoxidase of monoclonal antibody to DEC1 on formalin-fixed paraffin-embedded human heart. [antibody concentration 3 ug/ml]



ELISA

Image 3. Detection limit for recombinant GST tagged DEC1 is 0.3 ng/ml as a capture antibody.

Please check the [product details page](#) for more images. Overall 4 images are available for ABIN514947.