



[Go to Product page](#)

Datasheet for ABIN514965  
**anti-COCH antibody (AA 1-494)**

2 Images

Overview

Quantity:	50 µg
Target:	COCH
Binding Specificity:	AA 1-494
Reactivity:	Human
Host:	Mouse
Clonality:	Polyclonal
Conjugate:	This COCH antibody is un-conjugated
Application:	Western Blotting (WB)

Product Details

Purpose:	Mouse polyclonal antibody raised against a full-length human COCH protein.
Immunogen:	COCH (AAH07230.1, 1 a.a. ~ 494 a.a) full-length human protein.
Sequence:	MSAAWIPALG LGVCLLLLPG PAGSEGA API AITCFTRGLD IRKEKADVLC PGGCPLEEFSS VYGNIVYASV SSICGAAVHR GVISNSGGPV RVYSLPGREN YSSVDANGIQ SQMLSRWSAS FTVTKGKSST QEATGQAVST AHPPTGKRLK KTPEKKTGNK DCKADIAFLI DGSFNIGQRR FNLQKNFVGK VALMLGIGTE GPHVGLVQAS EHPKIEFYLK NFTSAKDVLF AIKEVGFRGG NSNTGKALKH TAQKFFT VDA GVRKGIKPVV VVFDGWPSD DIEEAGIVAR EFGVNVFIVS VAKPIPEELG MVQDVT FVDK AVCRNNGFFS YHMPNWF GTT KYVKPLVQKL CTHEQMMCSK TCYNSVNI AF LIDGSSSVGD SNFRLMLEFV SNI AKT FEIS DIGAKIAAVQ FTYDQRTEFS FTDYSTKENV LAVIRNIRYM SGGTATGDAI SFTVRNVFGP IRESPKNFL VIVTDGQSYD DVQGPAAAAH DAAK

## Product Details

---

Cross-Reactivity:	Human
Characteristics:	Antibody reactive against mammalian transfected lysate.

## Target Details

---

Target:	COCH
Alternative Name:	COCH ( <a href="#">COCH Products</a> )
Background:	Full Gene Name: coagulation factor C homolog, cochlin (Limulus polyphemus) Synonyms: COCH-5B2,COCH5B2,DFNA9
Gene ID:	1690
Pathways:	<a href="#">Sensory Perception of Sound</a>

## Application Details

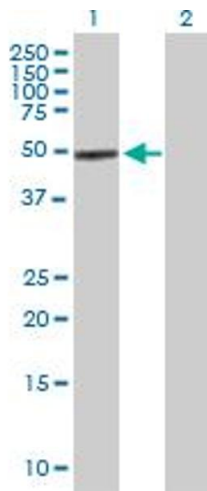
---

Application Notes:	Optimal working dilution should be determined by the investigator.
Restrictions:	For Research Use only

## Handling

---

Buffer:	In 1x PBS, pH 7.4
Handling Advice:	Aliquot to avoid repeated freezing and thawing.
Storage:	-20 °C
Storage Comment:	Store at -20°C or lower. Aliquot to avoid repeated freezing and thawing.

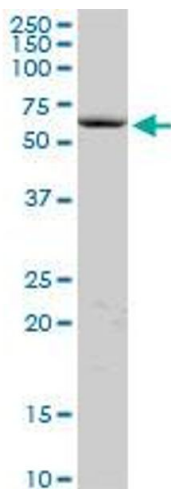


### Western Blotting

**Image 1.** Western Blot analysis of COCH expression in transfected 293T cell line by COCH MaxPab polyclonal antibody.

Lane 1: COCH transfected lysate(54.34 KDa).

Lane 2: Non-transfected lysate.



### Western Blotting

**Image 2.** COCH MaxPab polyclonal antibody. Western Blot analysis of COCH expression in HeLa.