



[Go to Product page](#)

Datasheet for ABIN515002  
**anti-DLX1 antibody (AA 1-255)**

2 Images

Overview

Quantity:	50 µg
Target:	DLX1
Binding Specificity:	AA 1-255
Reactivity:	Human
Host:	Mouse
Clonality:	Polyclonal
Conjugate:	This DLX1 antibody is un-conjugated
Application:	Western Blotting (WB), Immunofluorescence (IF)

Product Details

Purpose:	Mouse polyclonal antibody raised against a full-length human DLX1 protein.
Immunogen:	DLX1 (NP_835221.2, 1 a.a. ~ 255 a.a) full-length human protein.
Sequence:	MTMTTMPESL NSPVSGKAVF MEFGPPNQQM SPSPMSHGHY SMHCLHSAGH SQPDGAYSSA SSFSRPLGYP YVNSVSSHAS SPYISSVQSY PGSASLAQSR LEDPGADSEK STVVEGGEVR FNGKGGKIRK PRTIYSSLQL QALNRRFQQT QYLALPERAE LAASLGLTQT QVKIWFQNKR SKFKKLMKQG GAALEGSALA NGRALSAGSP PVPPGWNPNPNS SSGKGSGGNA GSYIPSYTSW YPSAHQEAMQ QPQLM
Cross-Reactivity:	Human
Characteristics:	Antibody reactive against mammalian transfected lysate.

## Target Details

Target:	DLX1
Alternative Name:	DLX1 ( <a href="#">DLX1 Products</a> )
Background:	Full Gene Name: distal-less homeobox 1 Synonyms:
Gene ID:	1745
NCBI Accession:	<a href="#">NM_178120</a>

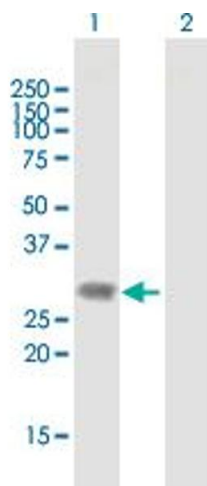
## Application Details

Application Notes:	Optimal working dilution should be determined by the investigator.
Restrictions:	For Research Use only

## Handling

Buffer:	In 1x PBS, pH 7.4
Handling Advice:	Aliquot to avoid repeated freezing and thawing.
Storage:	-20 °C
Storage Comment:	Store at -20°C or lower. Aliquot to avoid repeated freezing and thawing.

## Images

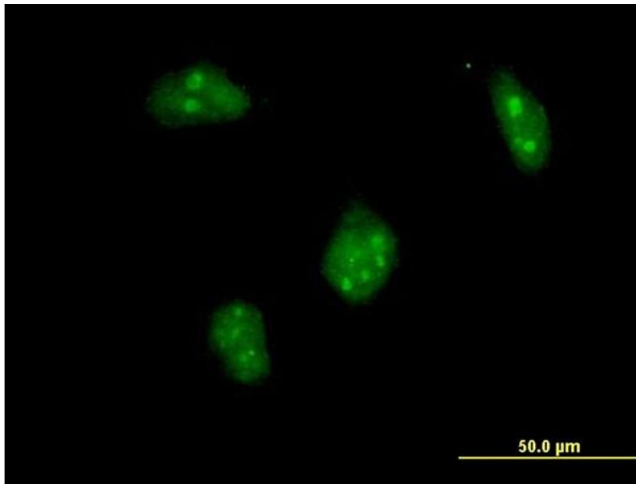


### Western Blotting

**Image 1.** Western Blot analysis of DLX1 expression in transfected 293T cell line by DLX1 MaxPab polyclonal antibody.

Lane 1: DLX1 transfected lysate(28.05 KDa).

Lane 2: Non-transfected lysate.



### Immunofluorescence

**Image 2.** Immunofluorescence of purified MaxPab antibody to DLX1 on HeLa cell. [antibody concentration 10 ug/ml]