



[Go to Product page](#)

Datasheet for ABIN515004

## anti-DLX1 antibody (AA 181-254)

### 3 Images

#### Overview

Quantity:	100 µg
Target:	DLX1
Binding Specificity:	AA 181-254
Reactivity:	Human
Host:	Mouse
Clonality:	Monoclonal
Conjugate:	This DLX1 antibody is un-conjugated
Application:	Western Blotting (WB), ELISA

#### Product Details

Purpose:	Mouse monoclonal antibody raised against a full length recombinant DLX1.
Immunogen:	DLX1 (NP_835221, 181 a.a. ~ 254 a.a) full length recombinant protein with GST tag. MW of the GST tag alone is 26 KDa.
Sequence:	SKFKKLMKQG GAALEGSALA NGRALSAGSP PVPPGWNPNSSSGKGGGNA GSYIPSYTSW YPSAHQEAMQ QPQL*
Clone:	1B2
Isotype:	IgG2a
Cross-Reactivity:	Human
Characteristics:	Antibody Reactive Against Recombinant Protein.

## Target Details

Target:	DLX1
Alternative Name:	DLX1 ( <a href="#">DLX1 Products</a> )
Background:	Full Gene Name: distal-less homeobox 1 Synonyms:
Gene ID:	1745
NCBI Accession:	<a href="#">NM_178120</a>

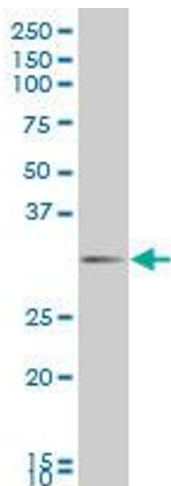
## Application Details

Application Notes:	Optimal working dilution should be determined by the investigator.
Restrictions:	For Research Use only

## Handling

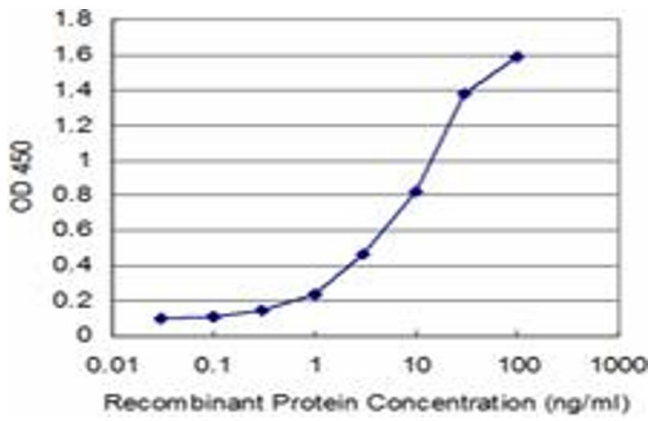
Buffer:	In 1x PBS, pH 7.4
Handling Advice:	Aliquot to avoid repeated freezing and thawing.
Storage:	-20 °C
Storage Comment:	Store at -20°C or lower. Aliquot to avoid repeated freezing and thawing.

## Images



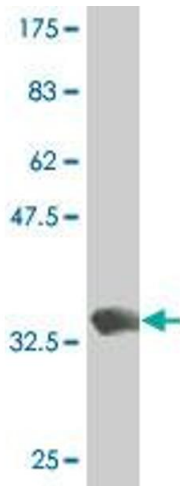
### Western Blotting

**Image 1.** DLX1 monoclonal antibody (M12), clone 1B2  
Western Blot analysis of DLX1 expression in SW-13 .



### ELISA

**Image 2.** Detection limit for recombinant GST tagged DLX1 is approximately 0.3ng/ml as a capture antibody.



### Western Blotting

**Image 3.** Western Blot detection against Immunogen (34.25 kDa).