



[Go to Product page](#)

Datasheet for ABIN515005
anti-DLX1 antibody (AA 181-254)

3 Images

Overview

Quantity:	100 µg
Target:	DLX1
Binding Specificity:	AA 181-254
Reactivity:	Human
Host:	Mouse
Clonality:	Monoclonal
Conjugate:	This DLX1 antibody is un-conjugated
Application:	Western Blotting (WB), ELISA, Immunoprecipitation (IP)

Product Details

Purpose:	Mouse monoclonal antibody raised against a full length recombinant DLX1.
Immunogen:	DLX1 (NP_835221, 181 a.a. ~ 254 a.a) full length recombinant protein with GST tag. MW of the GST tag alone is 26 KDa.
Sequence:	SKFKKLMKQG GAALEGSALA NGRALSAGSP PVPPGWNPNSSSGKGGGNA GSYIPSYTSW YPSAHQEAMQ QPQL*
Clone:	4H7
Isotype:	IgG2a
Cross-Reactivity:	Human
Characteristics:	Antibody Reactive Against Recombinant Protein.

Target Details

Target:	DLX1
Alternative Name:	DLX1 (DLX1 Products)
Background:	Full Gene Name: distal-less homeobox 1 Synonyms:
Gene ID:	1745
NCBI Accession:	NM_178120

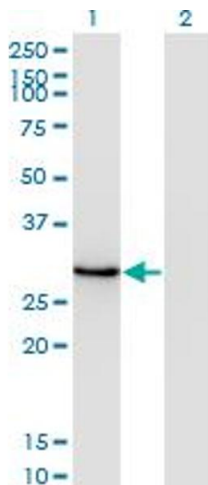
Application Details

Application Notes:	Optimal working dilution should be determined by the investigator.
Restrictions:	For Research Use only

Handling

Buffer:	In 1x PBS, pH 7.4
Handling Advice:	Aliquot to avoid repeated freezing and thawing.
Storage:	-20 °C
Storage Comment:	Store at -20°C or lower. Aliquot to avoid repeated freezing and thawing.

Images

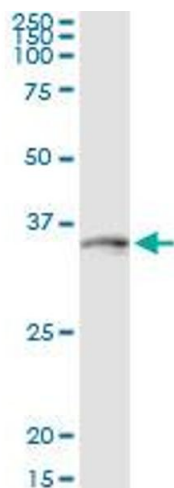


Western Blotting

Image 1. Western Blot analysis of DLX1 expression in transfected 293T cell line by DLX1 monoclonal antibody (M14), clone 4H7.

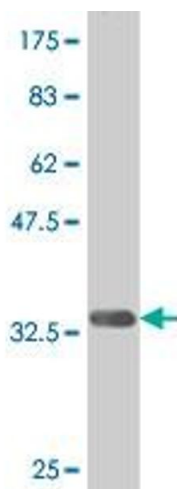
Lane 1: DLX1 transfected lysate(27.3 KDa).

Lane 2: Non-transfected lysate.



Immunoprecipitation

Image 2. Immunoprecipitation of DLX1 transfected lysate using anti-DLX1 monoclonal antibody and Protein A Magnetic Bead , and immunoblotted with DLX1 MaxPab rabbit polyclonal antibody.



Western Blotting

Image 3. Western Blot detection against Immunogen (34.25 KDa) .